



2.7"NB Super Maxi Pressure Only Rail Car Relief Valve - flanged tank connection, available with tongue and groove or raised face in 2 sizes: Ø7.5" drilled 4 x 0.87" holes equi-spaced on a 6.25" PCD or Ø12.0" drilled 8 x 0.75" holes equi-spaced on a 10.3" PCD. Standard pressure settings: 75 PSIG (5.17 Bar); 165 PSIG (11.38 Bar). Contact parts manufactured in 316 stainless steel fitted with Viton A, Viton B or Viton GFLT seal as standard.

Options - alternative pressure settings and a wide range of seal materials are available. A combined pressure and vacuum valve is available.

Specification

Weight 30 to 39 Lbs ***Note**
 Design Pressure (MAWP) 165 PSIG (11.38 Barg)
 Test Pressure 248 PSIG (17.1 Barg)
 Min/Max Design Temperature ***Note**

***Note:** Weight varies according to specification. Design Temperature is dependant upon seal material, please contact Fort Vale for further information.

For certified full flow rates, please refer to the assembly drawing.

AAR Application No: PRD139511

Range

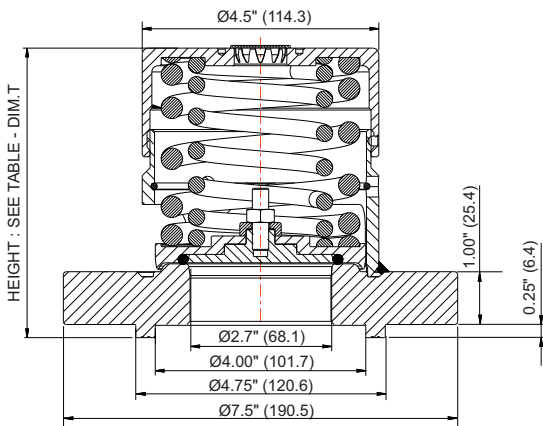
Part No.	Description
0R3/XXXX006T	Ø7.5" tongue & groove flange
0R3/XXXX006R	Ø7.5" raised face flange
0R3/XXXX006S	Ø12.0" tongue & groove flange
0R3/XXXX006V	Ø12.0" raised face flange

Valve Height - see below

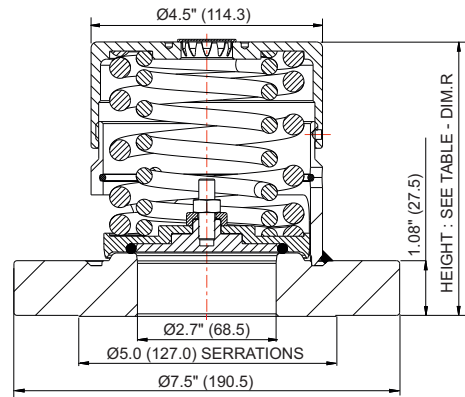
Set Pressure	Valve Height in Inches			
	Dim. T	Dim. R	Dim. S	Dim. V
75 PSIG	4.43"	4.26"	4.78"	4.72"
165 PSIG	5.51"	5.34"	5.78"	5.72"

Fitting Details

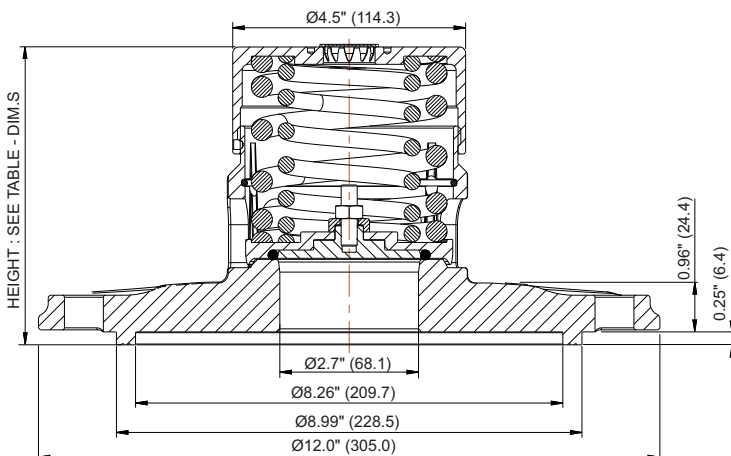
Part No: 0R3/XXXX006T - 7.5" Tongue & groove flange



Part No: 0R3/XXXX006R - 7.5" Raised face flange



Part No: 0R3/XXXX006S - 12" Tongue & groove flange



Part No: 0R3/XXXX006V - 12" Raised face flange

