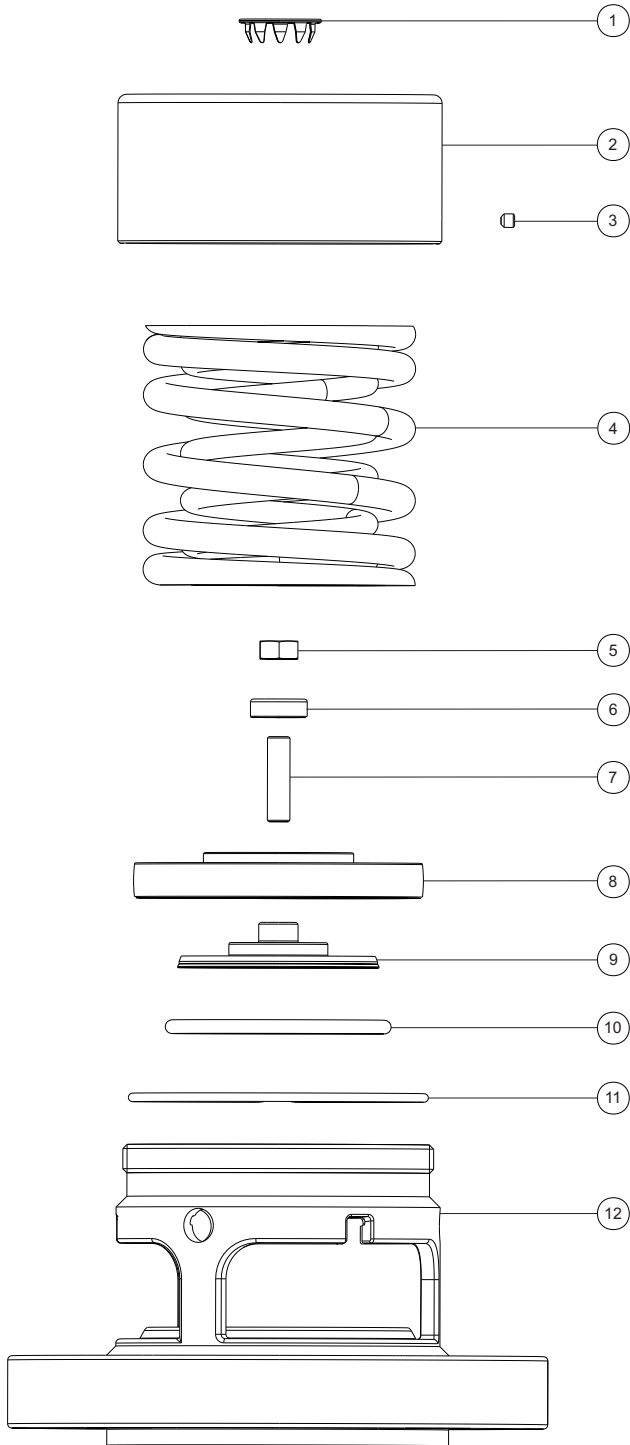


Parts drawing



Item	Description	Part No.
1	Stainless steel plug	10978/1
2	Top cap (75PSI set pressure) Top cap (165PSI set pressure)	1760/0028 1860/0041/5
3	Grubscrew	5121-001
4	Spring pair	See Table 1
5	5/16" full nut	5112-019
6	Retaining washer	1860/0190/3
7	5/16" stud	312/1018
8	Outer pressure plate *See Note	1860/019AXXX
9	Inner pressure plate *See Note	1860/0190/2X
10	Pressure O ring : Viton A Pressure O ring : Viton B Pressure O ring : Viton GFLT	ORB335VR ORB335VB ORB335GF
11	Retaining ring clip	5120-067
12	Body - 7.5" tongue & groove (T) Body - 7.5" raised face (R) Body - 12" tongue & groove (S) Body - 12" raised face (V)	1860/0626F 1860/0625F 1860/0627F 1860/0628F

Note : Part number varies according to valve specification.

TABLE 1

Common Pressure Setting	Part number
75 PSI	6104-0570 (Pair)
165 PSI	6104-1264R (Pair)

Other pressure settings are available - please contact Fort Vale.