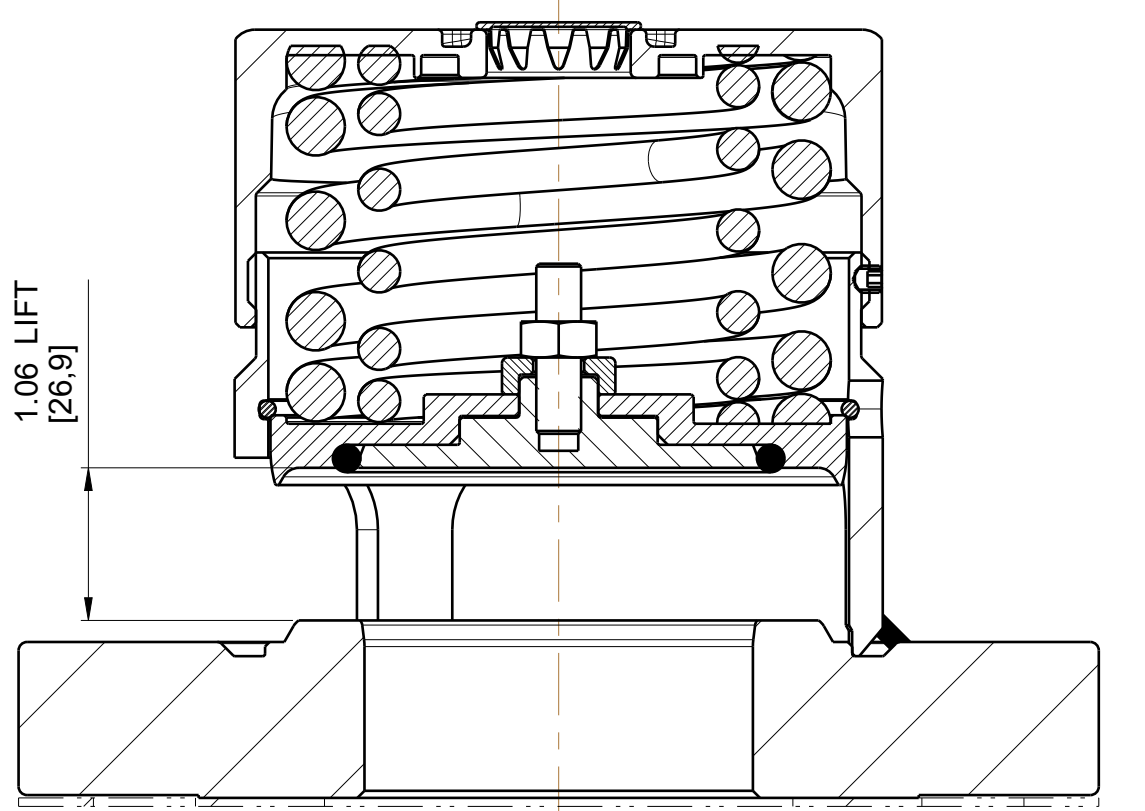
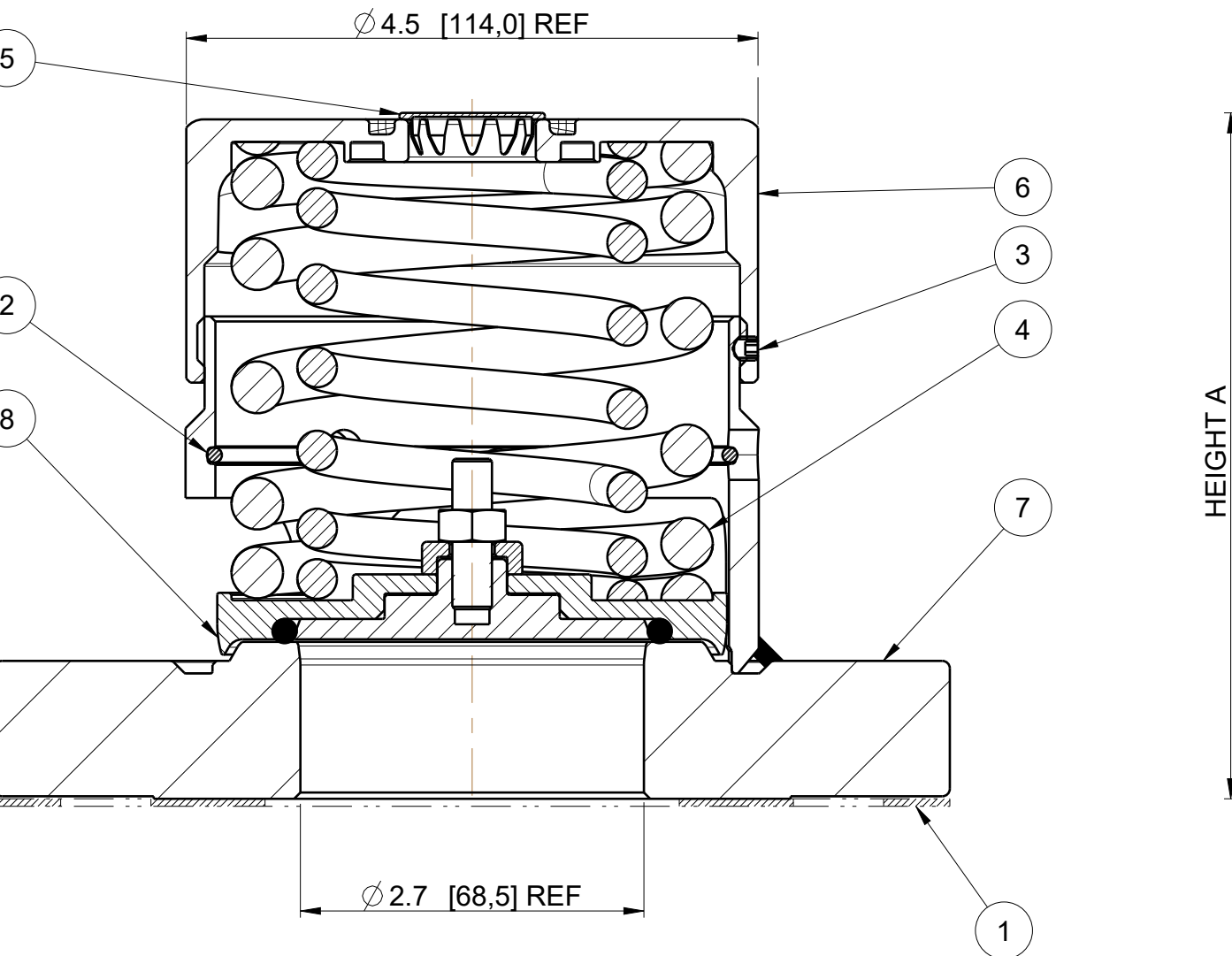


PART NUMBER EXAMPLE :-  
 OR3/0165006R VALVE DENOTES  
 65mm RELIEF VALVE SET AT 165 PSIG  
 PRESSURE SEAL MATERIAL VITON A

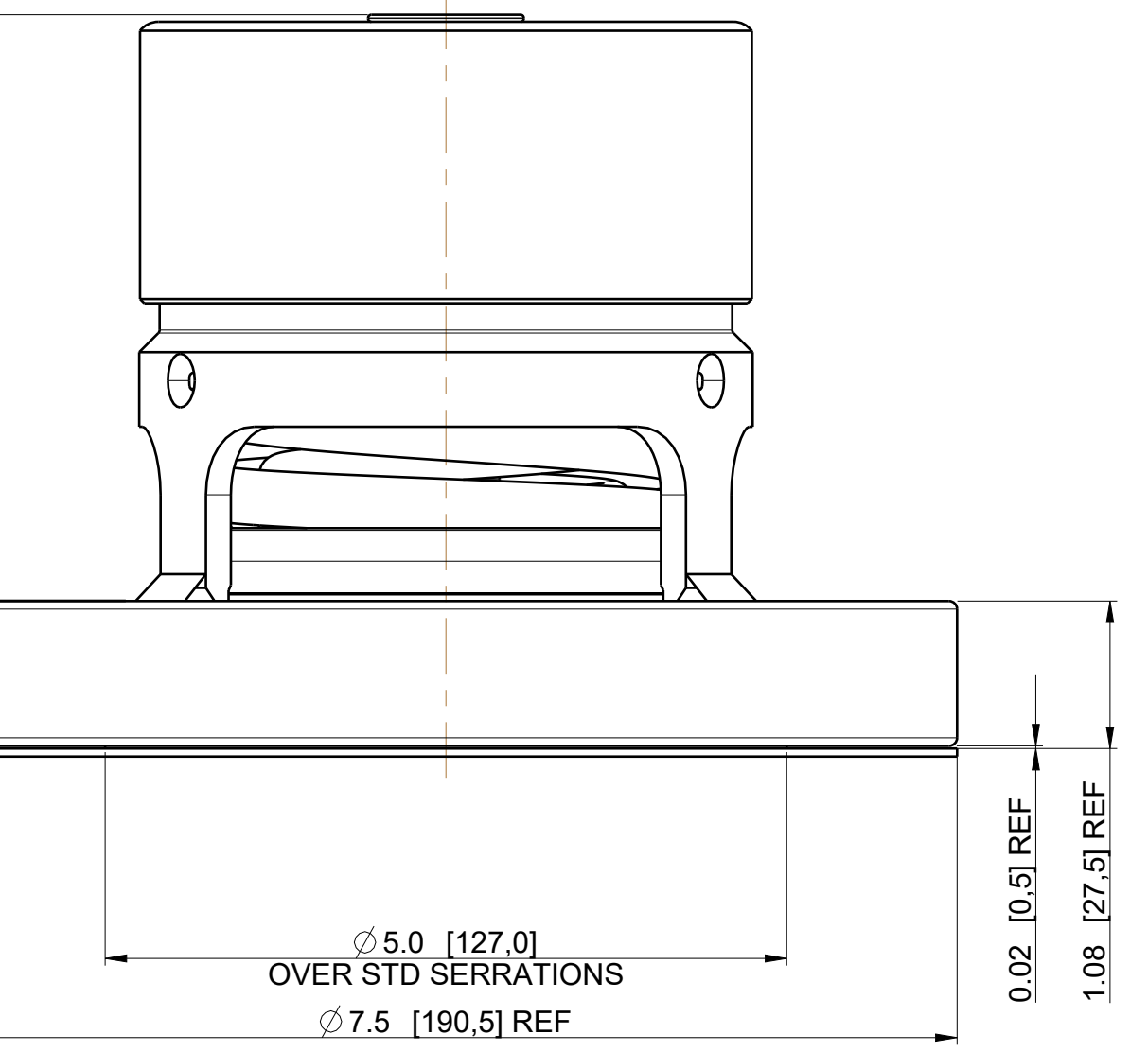
|                          |    |            |           |
|--------------------------|----|------------|-----------|
| DRAWING STATUS           |    | Production |           |
| REVISION                 | 22 | SIG        | J THOMAS  |
|                          |    |            | 24-Sep-21 |
| <a href="#">DVN LINK</a> |    |            |           |



SECTION A-A  
 SCALE 3:4  
 VALVE IN OPEN POSITION



SECTION A-A



AAR APPLICATION NUMBER: PRD139511

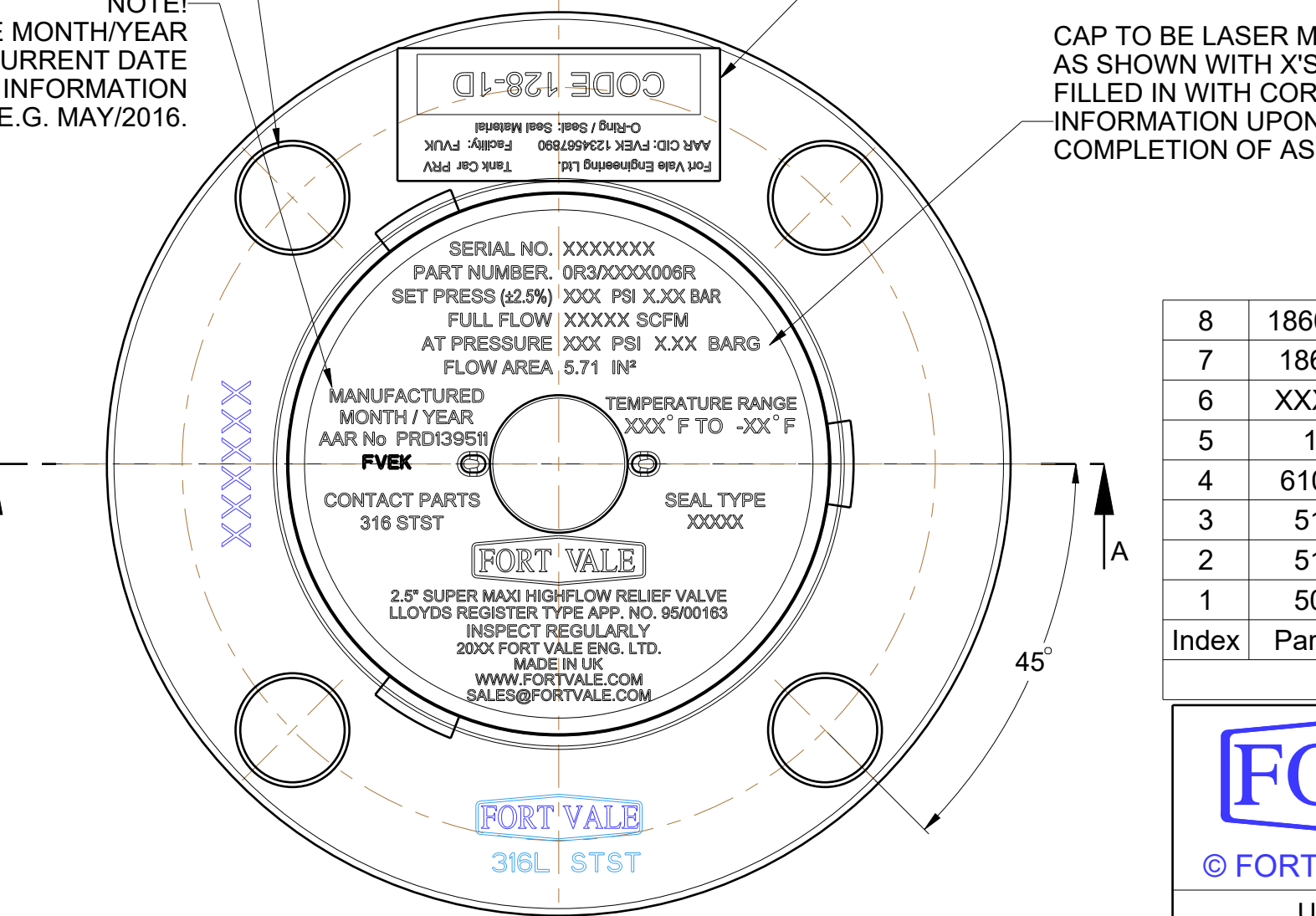
MATERIAL MUST CONFORM TO:  
 ASME SA351 CF3M, ASTM CF3M (YEAR DATE)  
 ASME SA479 316L, ASTM A479 316L(YEAR DATE)

DESIGN CODES: AAR M1002, ASME VIII DIV 1  
 DESIGN PRESSURE (MAWP): 165 PSI (11.38 BAR)  
 SERVICE TEST PRESSURE : 283 PSI (19.50 BAR)  
 MAX DESIGN TEMPERATURE: 302° F (150° C)  
 MIN DESIGN TEMPERATURE: -67° F (-55° C) } FOR METAL PARTS  
 REFER TO TABLE 2 FOR SEAL TEMPERATURE LIMITATIONS

4 HOLES Ø 0.87 [22.0]  
 THRO' EQUISPACED  
 AS SHOWN ON A  
 6.25 [158.75] PCD.  
 NOTE!  
 REPLACE MONTH/YEAR  
 WITH CURRENT DATE  
 INFORMATION  
 E.G. MAY/2016.

AFFIX CID TAG HERE

CAP TO BE LASER MARKED  
 AS SHOWN WITH X'S TO BE  
 FILLED IN WITH CORRECT  
 INFORMATION UPON  
 COMPLETION OF ASSEMBLY



| Part Number  | Seal Material                        | Pressure Plate | Min Temp        | Max Temp        |
|--------------|--------------------------------------|----------------|-----------------|-----------------|
| OR3/UXXX006R | VITON B (TRELLEBORG 4273B)           | 1860/U190XX    | -15° C (+5° F)  | 150° C (302° F) |
| OR3/WXXX006R | WHITE BUNA N (FOOD GRADE)            | 1860/W190XX    | -30° C (-22° F) | 100° C (212° F) |
| OR3/SXXX006R | VITON GF-S (PEROXIDE CURED)          | 1860/S190XX    | -20° C (-4° F)  | 150° C (302° F) |
| OR3/TXXX006R | FORTYT PFA OUTER/SILICON CORE        | 1860/T190XX    | -55° C (-67° F) | 150° C (302° F) |
| OR3/NXXX006R | WHITE NEOPRENE (FOOD GRADE)          | 1860/Y190XX    | -30° C (-22° F) | 100° C (212° F) |
| OR3/KXXX006R | KALREZ 1050LF                        | 1860/L190XX    | -15° C (+5° F)  | 150° C (302° F) |
| OR3/JXXX006R | FORTYT FEP OUTER/VITON               | 1860/J190XX    | -20° C (-4° F)  | 150° C (302° F) |
| OR3/HXXX006R | BLACK EPDM (PEROXIDE CURED)          | 1860/M190XX    | -46° C (-50° F) | 121° C (250° F) |
| OR3/GXXX006R | VITON GFLT                           | 1860/G190XX    | -25° C (-13° F) | 150° C (302° F) |
| OR3/FXXX006R | BLACK NEOPRENE                       | 1860/Q190XX    | -45° C (-49° F) | 100° C (212° F) |
| OR3/EXXX006R | VITON GF-S (TRELLEBORG MATL. CS5350) | 1860/P190XX    | -20° C (-4° F)  | 150° C (302° F) |
| OR3/DXXX006R | WHITE EPDM FDA APPROVED              | 1860/D190XX    | -50° C (-58° F) | 150° C (302° F) |
| OR3/CXXX006R | CHEMRAZ 505                          | 1860/C190XX    | -30° C (-22° F) | 150° C (302° F) |
| OR3/BXXX006R | VITON B (DUPONT)                     | 1860/B190XX    | -15° C (+5° F)  | 150° C (302° F) |
| OR3/AXXX006R | AFLAS                                | 1860/A190XX    | -30° C (-22° F) | 150° C (302° F) |
| OR3/9XXX006R | EPDM                                 | 1860/E190XX    | -50° C (-58° F) | 150° C (302° F) |
| OR3/7XXX006R | PERFLUOROELASTOMER                   | 1860/K190XX    | -15° C (+5° F)  | 150° C (302° F) |
| OR3/4XXX006R | BLACK BUNA N (NITRILE)               | 1860/N190XX    | -30° C (-22° F) | 100° C (212° F) |
| OR3/3XXX006R | KALREZ 6375                          | 1860/R190XX    | -15° C (+5° F)  | 150° C (302° F) |
| OR3/1XXX006R | FORTYT FEP OUTER/SILICON CORE        | 1860/F190XX    | -55° C (-67° F) | 150° C (302° F) |
| OR3/0XXX006R | VITON A                              | 1860/V190XX    | -20° C (-4° F)  | 150° C (302° F) |

| Part Number  | Top Cap (Item 6) | Pressure Plate (Item 8) | Inner Pressure Springs | Outer Pressure Springs | Set Pressure PSI [BAR] | 113% Certified Full Flow SCFM [SM <sup>3</sup> /S] | 113% Over Pressure PSI [BAR] | 120% Certified Full Flow SCFM [SM <sup>3</sup> /S] | 120% Over Pressure PSI [BAR] | 130% Certified Full Flow SCFM [SM <sup>3</sup> /S] | 130% Over Pressure PSI [BAR] | Mass lb [kg] | Height A inch [mm] |
|--------------|------------------|-------------------------|------------------------|------------------------|------------------------|----------------------------------------------------|------------------------------|----------------------------------------------------|------------------------------|----------------------------------------------------|------------------------------|--------------|--------------------|
| OR3/X165006R | 1860/0041/B      | 1860/X19054             | 6104-1264R             | SPRING PAIR            | 165.0 [11.38]          |                                                    | 22286 [10.52]                | 198.0 [13.66]                                      | 24000 [11.33]                | 214.5 [14.79]                                      | 35.0 [15.9]                  | 5.34 [135.6] |                    |
| OR3/X075006R | 1760/0028        | 1860/X19060             | 6104-0570              | SPRING PAIR            | 75.0 [5.17]            | 9564.7 [4.51]                                      | 85.0 [5.86]                  | 10131 [4.78]                                       | 90.0 [6.21]                  | 11052 [5.22]                                       | 97.5 [6.72]                  | 33.0 [15.0]  | 4.26 [108.2]       |

| Index | Part Number | Description                               | Material    | Qty |
|-------|-------------|-------------------------------------------|-------------|-----|
| 8     | 1860/X190XX | COMPOSITE PRESSURE PLATE (SEE TABLES 1&2) | 316 STST    | 1   |
| 7     | 1860/0625F  | 65mm SUPERMAXI R/V 62PSI                  | 316L STST   | 1   |
| 6     | XXXX/XXXX   | TOP CAP (SEE TABLE 1)                     | 304 STST    | 1   |
| 5     | 10978/1     | STAINLESS PLUG                            | 304L STST   | 1   |
| 4     | 6104-XXXX   | PRESSURE SPRING (SEE TABLE 1)             | 17/7 SS     | 1   |
| 3     | 5121-001    | 3/16"BSW.3/16"LG SOCKETHEAD               | A2-70       | 1   |
| 2     | 5120-067    | RETAINING RING CLIP                       | 316 STST    | 1   |
| 1     | 5005-417    | PTFE GASKET (SUPPLIED SEPARATE)           | VIRGIN PTFE | 1   |

| Index | Part Number | Description                               | Material    | Qty |
|-------|-------------|-------------------------------------------|-------------|-----|
| 8     | 1860/X190XX | COMPOSITE PRESSURE PLATE (SEE TABLES 1&2) | 316 STST    | 1   |
| 7     | 1860/0625F  | 65mm SUPERMAXI R/V 62PSI                  | 316L STST   | 1   |
| 6     | XXXX/XXXX   | TOP CAP (SEE TABLE 1)                     | 304 STST    | 1   |
| 5     | 10978/1     | STAINLESS PLUG                            | 304L STST   | 1   |
| 4     | 6104-XXXX   | PRESSURE SPRING (SEE TABLE 1)             | 17/7 SS     | 1   |
| 3     | 5121-001    | 3/16"BSW.3/16"LG SOCKETHEAD               | A2-70       | 1   |
| 2     | 5120-067    | RETAINING RING CLIP                       | 316 STST    | 1   |
| 1     | 5005-417    | PTFE GASKET (SUPPLIED SEPARATE)           | VIRGIN PTFE | 1   |

SALES@FORTVALE.COM WWW.FORTVALE.COM

ENGLAND, USA, CHINA  
NETHERLANDS, SINGAPORE

© FORT VALE ENGINEERING LTD 2021.

DO NOT SCALE - IF IN DOUBT ASK

UNLESS OTHERWISE STATED

SURFACE FINISH 3.2um MAX  
CORNER RADII 0.8  
CORNER CHAMFER 1.0 X 45°  
REMOVE ALL BURRS AND SHARP EDGES

MATERIAL: 316L STST

SCALE: NTS MASS: SEE TABLE 1

CHECKED DVN: 35858

DESCRIPTION: 65mm SUPERMAXI HIGHFLOW R/V

TYPE: MK3 SUPER MAXI HIGH FLOW

SHEET 1 OF 1  
DRAWN BY: P BOULT  
DATE: 28-Aug-13

DRG.NO. OR3/XXXX006R