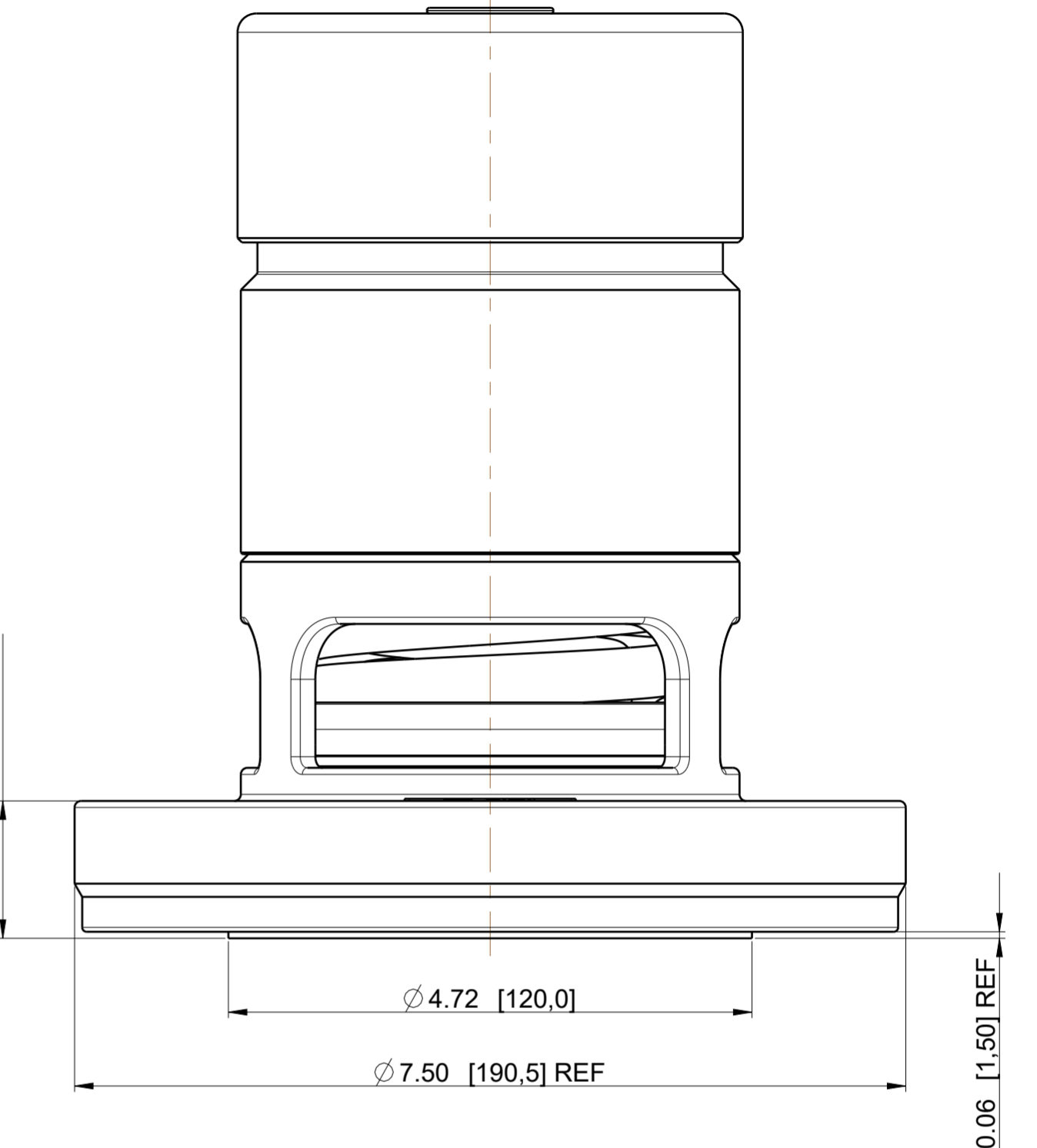
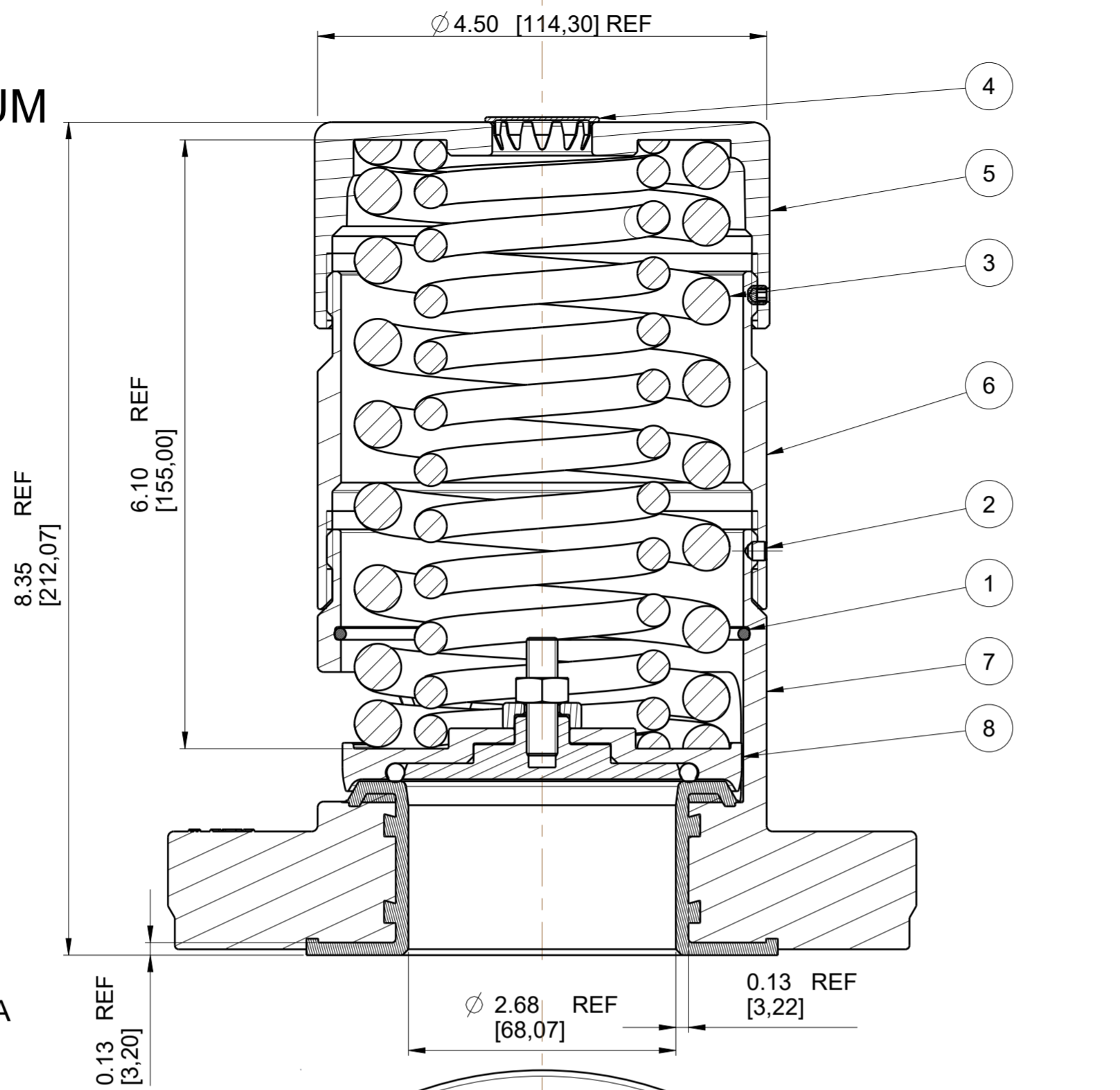


**NOTE! WETTED AREAS
BODY = PFA COATED
PRESSURE PLATE = ZIRCONIUM
SPRINGS INCONEL X750**

DRAWING STATUS		WIP		
REVISION	S4	SIG	D BAILEY	26-Nov-19
PRESSURE PLATE 1860/X191XXX WAS 1860/X190XXX				



SECTION A-A

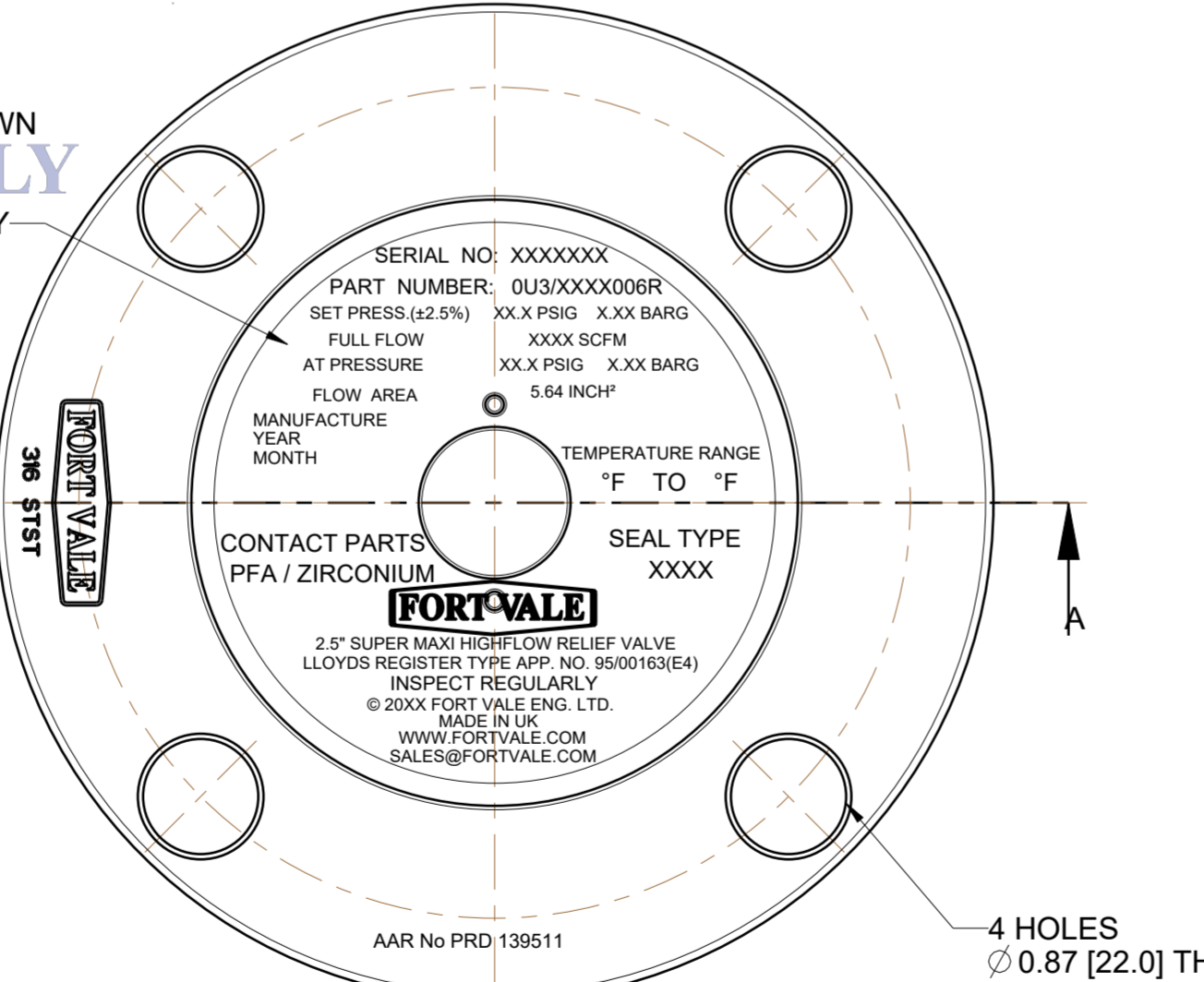
CAP TO BE LASER MARKED AS SHOWN WITH X'S TO BE FILLED IN WITH CORRECT INFORMATION UPON COMPLETION OF ASSEMBLY

SALES ARRANGEMENT ONLY

FORT VALE

PART NUMBER EXAMPLE :-
0U3/V165006R VALVE DENOTES
65mm RELIEF VALVE SET AT 165 PSIG
PRESSURE SEAL MATERIAL VITON A

AAR APPLICATION NUMBER: PRD 139511



MATERIAL MUST CONFORM TO Fort Vale Engineering Limited 2016
ASME SA351 CF3M, ASTM A351 CF3M(YEAR DATE)

The information contained herein is the property of Fort Vale Engineering Ltd
It is not to be copied, or divulged to any third party without the written permission of FORT VALE ENGINEERING LTD.

DESIGN CODE: ASME VIII DIV1
COLD RATING PRESSURE (CWP) : 11.38 BAR (165.0 PSI)
SERVICE TEST PRESSURE : 17.10 BAR (248.0 PSI)
MAX DESIGN TEMPERATURE : 150 °C (302 °F)
MIN DESIGN TEMPERATURE : 4 °C (40 °F)

8	1860/X191XXX	COMPOSITE 65mm PRESSURE PLATE	VARIOUS	1
7	1860/0635U	PFA LINED SUPER MAXI BODY MACHINING	CF3M / PFA	1
6	1860/0094	EXTENSION TUBE	316 STST	1
5	1860/0041/9XX	TOP CAP (SEE TABLE)	CF8	1
4	10978/1	STAINLESS PLUG	ST ST	1
3	6104-XXXXRI	PRESSURE SPRING (SEE TABLE)	INCONEL X750	1
2	5121-001	3/16"BSW.3/16"LG SOCKETHEAD	304 STST	2
1	5120-067	RETAINING RING CLIP	316 STST	1
Index	Part Number	Description	Material	Qty

FORT VALE SALES@FORTVALE.COM WWW.FORTVALE.COM

ENGLAND, USA, CHINA
NETHERLANDS, SINGAPORE

© FORT VALE ENGINEERING LTD 2018. DO NOT SCALE- IF IN DOUBT ASK

UNLESS OTHERWISE STATED FIRST ANGLE PROJECTION MATERIAL: VARIOUS

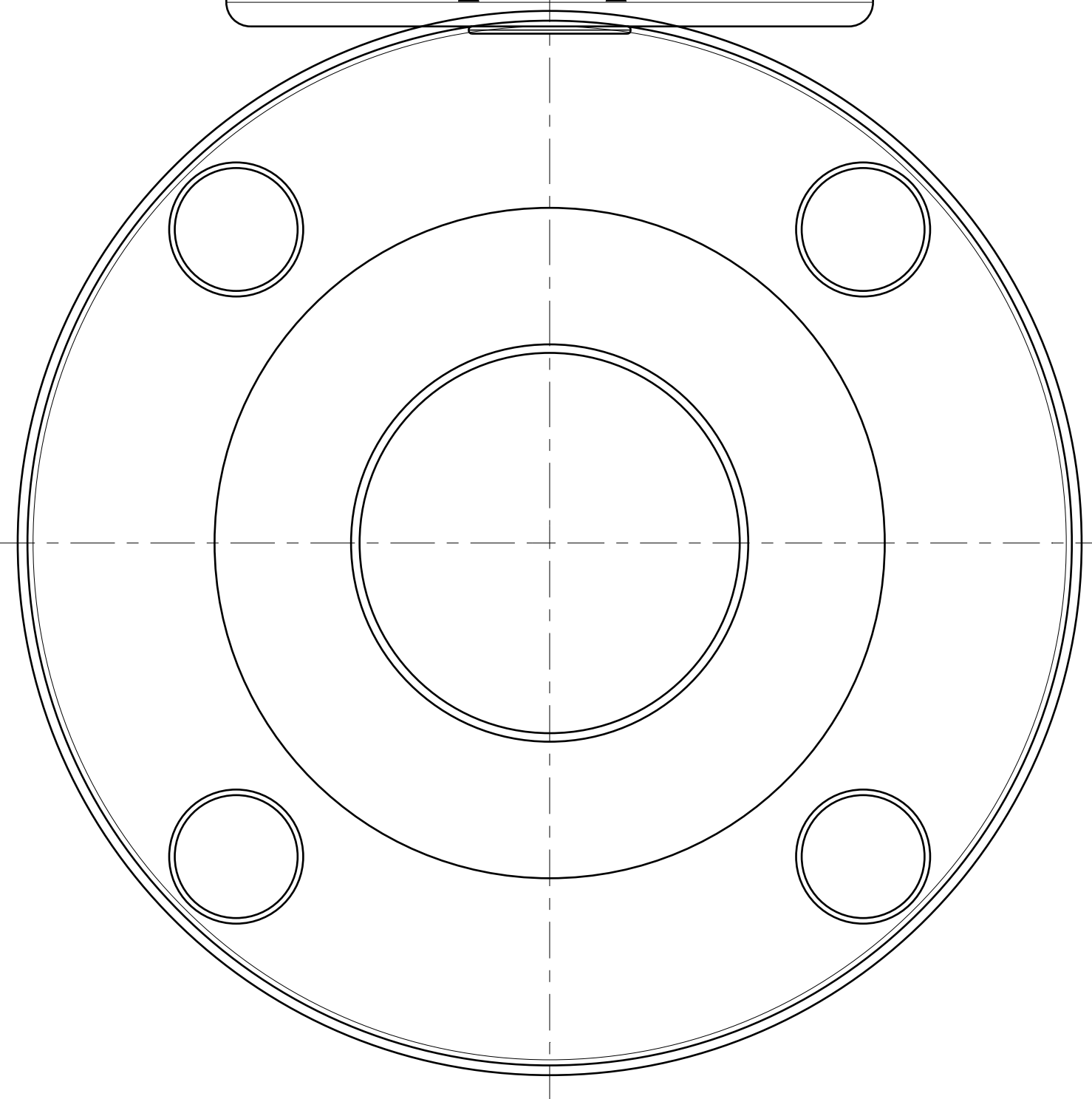
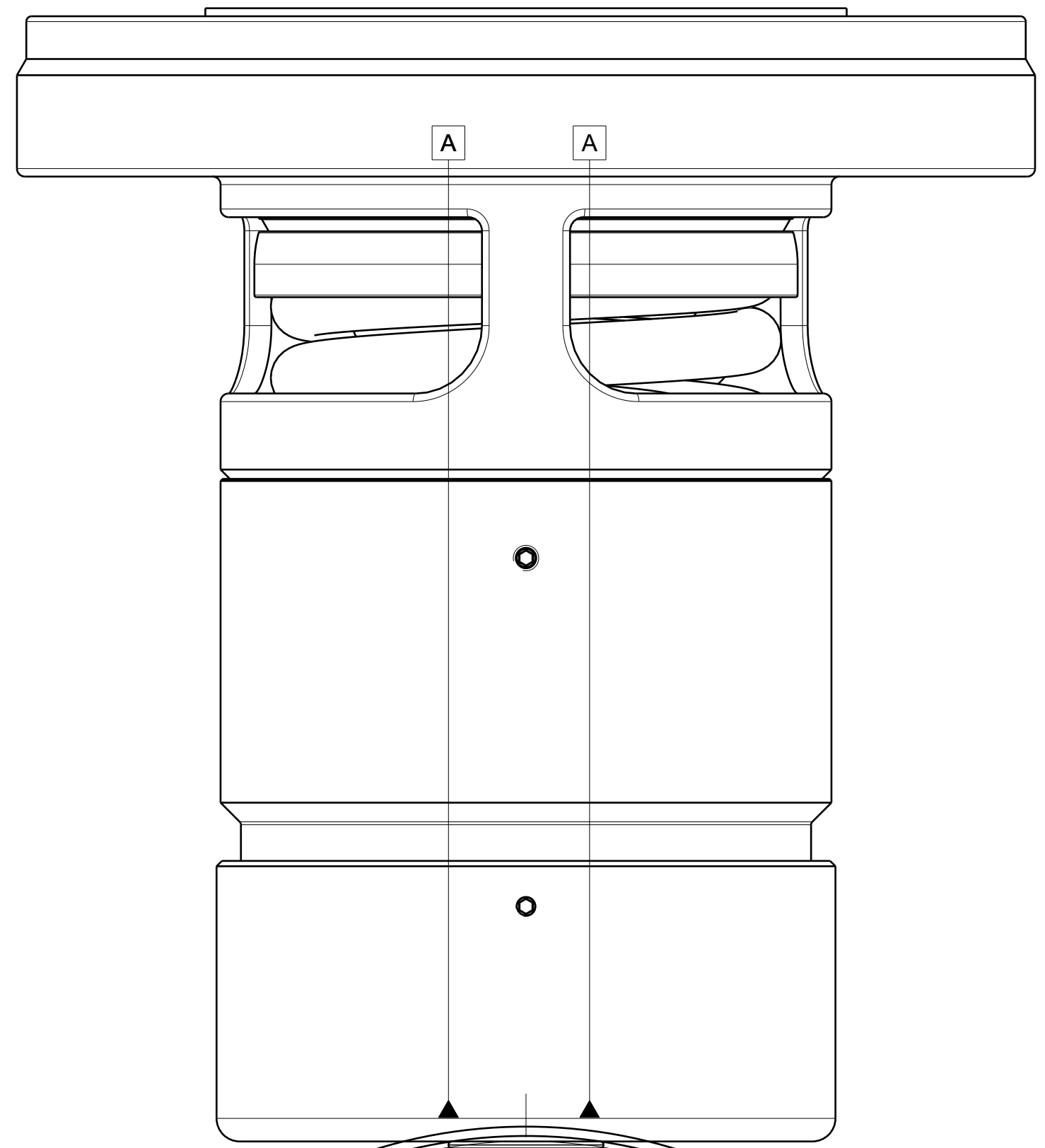
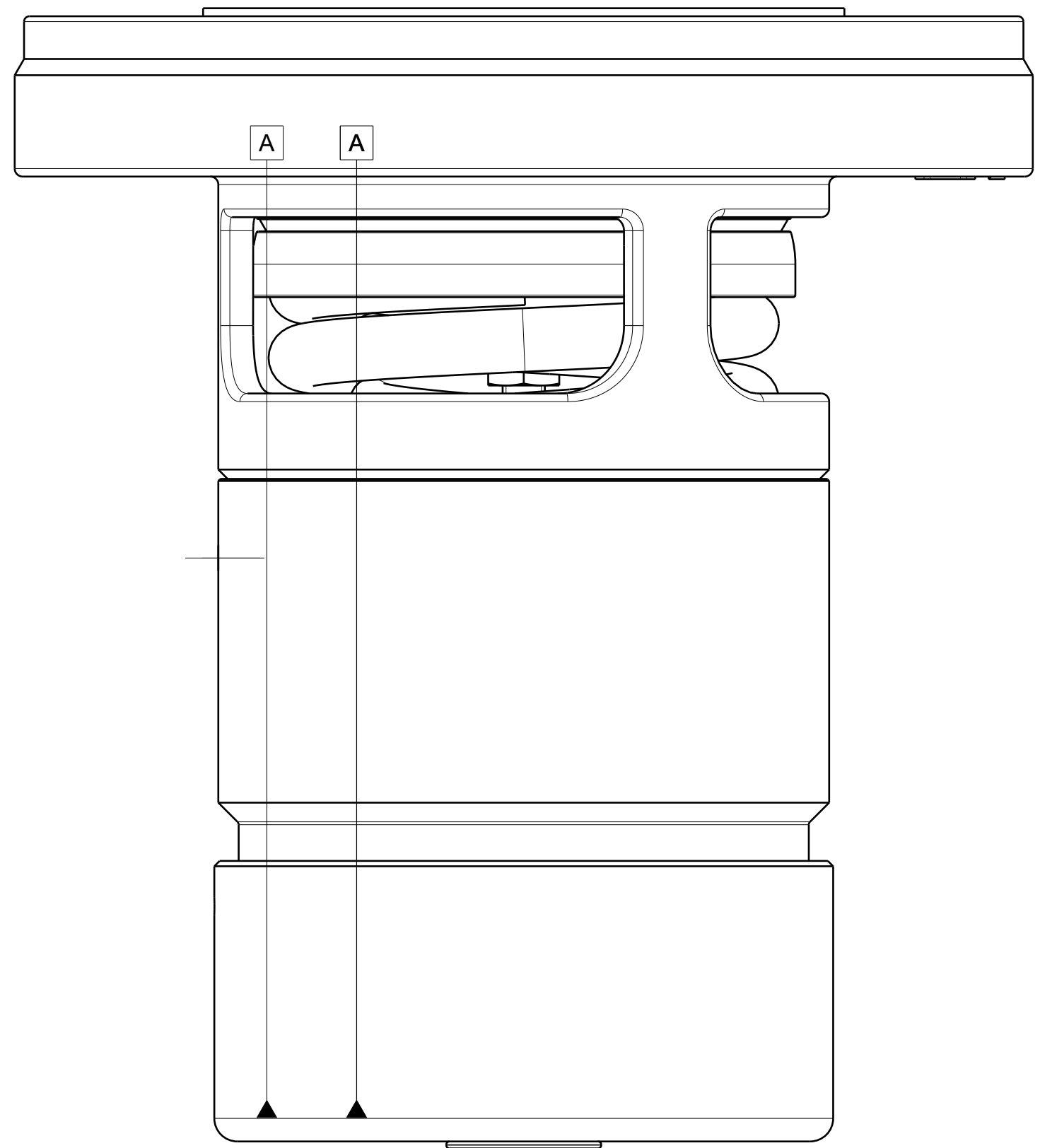
X.X ±0.5	SURFACE FINISH 3.2um MAX CORNER RADII 0.8 CORNER CHAMFER 1.0 X 45° REMOVE ALL BURRS AND SHARP EDGES	ISO9001:2015 REGISTERED FIRM: LRQ4007111	SCALE: 3:4	MASS: 11.91 kg	
X.XX ±0.25			CHECKED	DVN: TBA	
X.XXX ±0.125			DESCRIPTION		SHEET 1 OF 1
ANGLES ±0.5°			DRAWN BY: D BAILEY		DATE: 17-Oct-19

DESCRIPTION: 65mm SUPERMAXI HIGHFLOW R/V

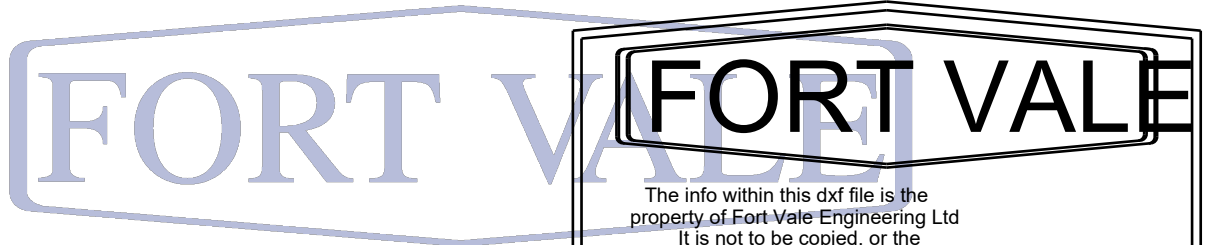
TYPE: MK3 SUPER MAXI HIGH FLOW

DRG.NO. 0U3/XXXX006R

0U3/FXXX006R	1860/Q191XXZ	ZIRCONIUM / 316 STST	BLACK NEOPREEN	-45°C	100°C					
0U3/0XXX006R	1860/V191XXZ	ZIRCONIUM / 316 STST	VITON A	-20°C	150°C					
VALVE PART NUMBER	VALVE PLATE PART NUMBER	PLATE MATERIAL	SEAL MATERIAL	SEAL MIN TEMP	SEAL MAX TEMP					
0U3/X165006R	1860/0041/949	1860/X191Z48	6104-1264RI	SPRING PAIR	165.0 [11.38]	22286.3 [10.52]	198.0 [13.66]	24000 [11.33]	214.5 [14.79]	26.2 [11.9]
PART NUMBER	TOP CAP (ITEM 5)	PRESSURE PLATE (ITEM 8)	INNER SPRING	OUTER SPRING	SET PRESSURE PSI [BAR]	120% CERTIFIED FULL FLOW SCFM [sm ³ /S]	120% OVER PRESSURE PSI [BAR]	130% CERTIFIED FULL FLOW SCFM [sm ³ /S]	130% OVER PRESSURE PSI [BAR]	MASS lb [kg]
1	2	3	4	5	6	7	8	9	10	11



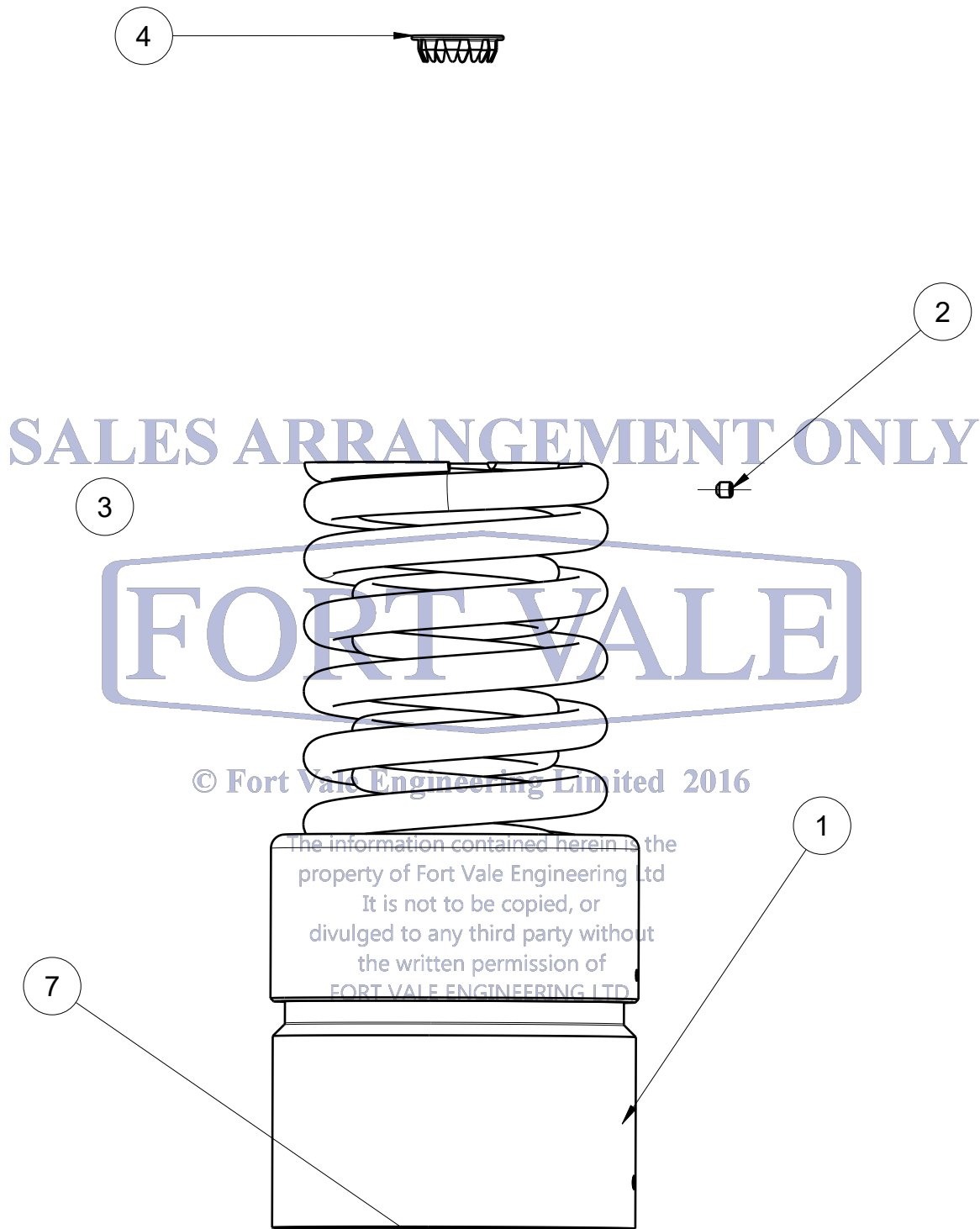
SALES ARRANGEMENT ONLY



© Fort Vale Engineering Limited

The information contained herein is the property of Fort Vale Engineering Ltd. It is not to be copied, or divulged to any third party without the written permission of FORT VALE ENGINEERING LTD.

FORT VALE	
The info within this dxf file is the property of Fort Vale Engineering Ltd. It is not to be copied, or the information contained herein divulged to any third party without the written permission of	
© FORT VALE ENGINEERING LTD. 2006	
THIS DXF FILE IS AN UNCONTROLLED COPY AND SUCH WILL NOT BE AUTOMATICALLY UPDATED	
ENGLAND	USA
NETHERLANDS	INDONESIA
DESCRIPTION	
65mm SUPERMAXI HIGHFLOW R/V	
DRG.NO. 0U3/XXXX006R	



8	1860/X191XXX	COMPOSITE 65mm PRESSURE PLATE	VARIOUS	1
7	1860/0635U	PFA LINED SUPER MAXI BODY MACHINING	CF3M / PFA	1
6	1860/0094	EXTENSION TUBE	316 STST	1
5	1860/0041/9XX	EXTENDED CAP MACHINING	CF8	1
4	10978/1	STAINLESS PLUG	304L STST	1
3	6104-1264RI	SPRING TYPE (SEE TABLE)	INCONEL X750	1
2	5121-001	3/16"BSW.3/16"LG SOCKETHEAD	304 STST	2
1	5120-067	RETAINING RING CLIP	316 STST	1
Index	Part Number	Description	Material	Quantity