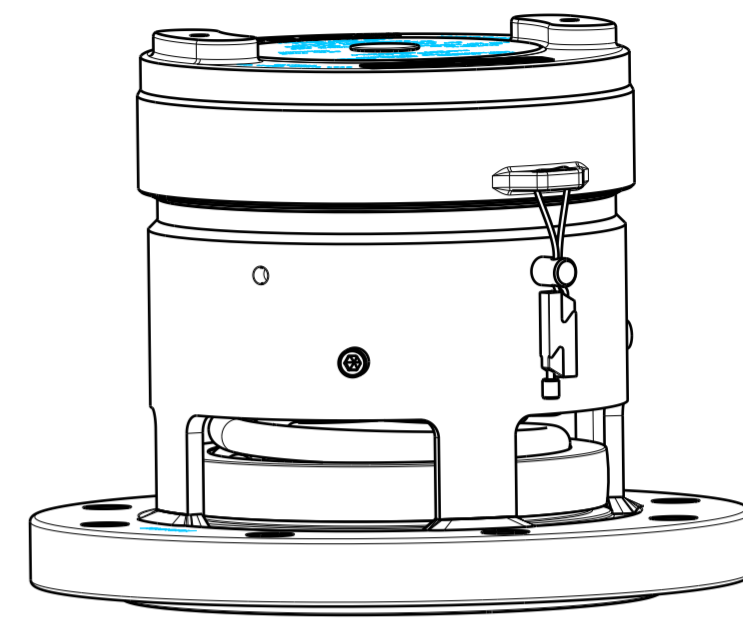
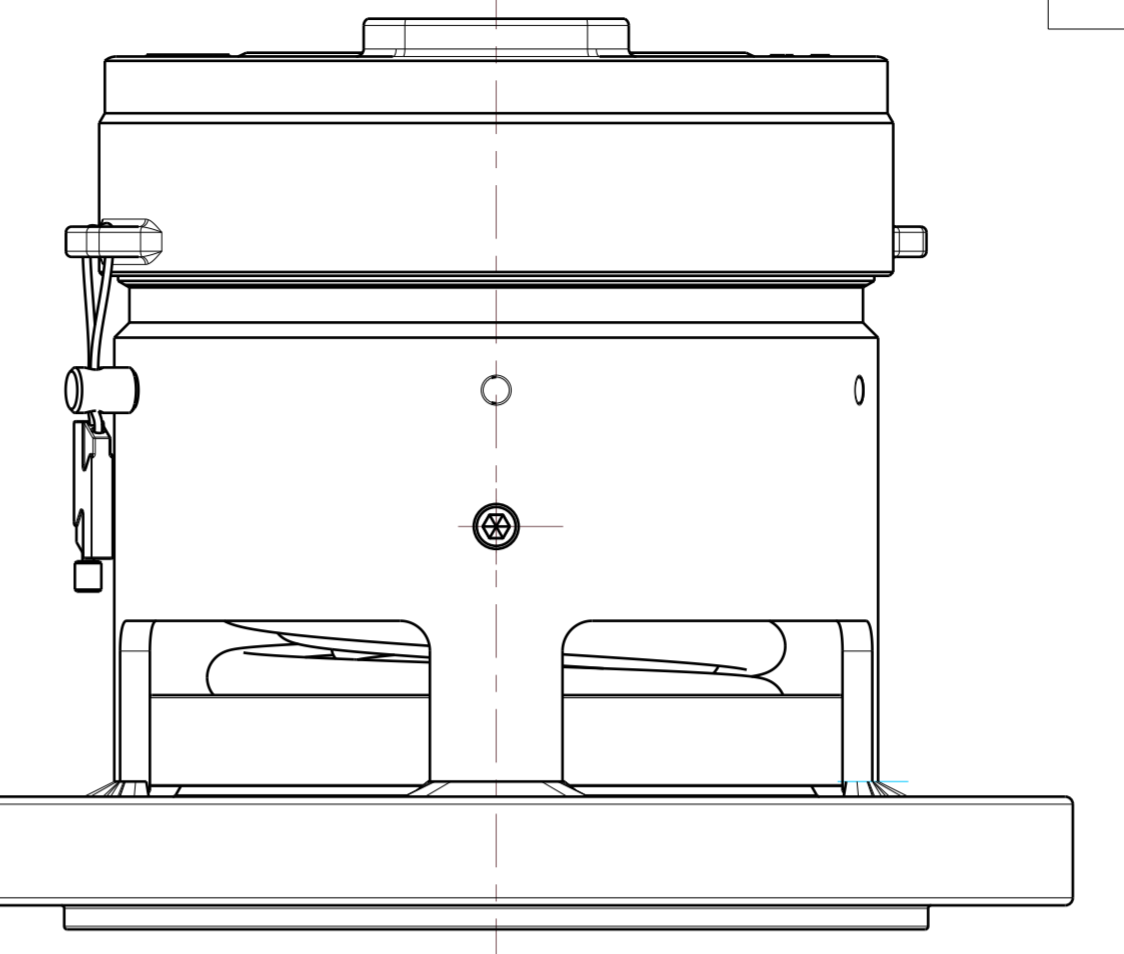
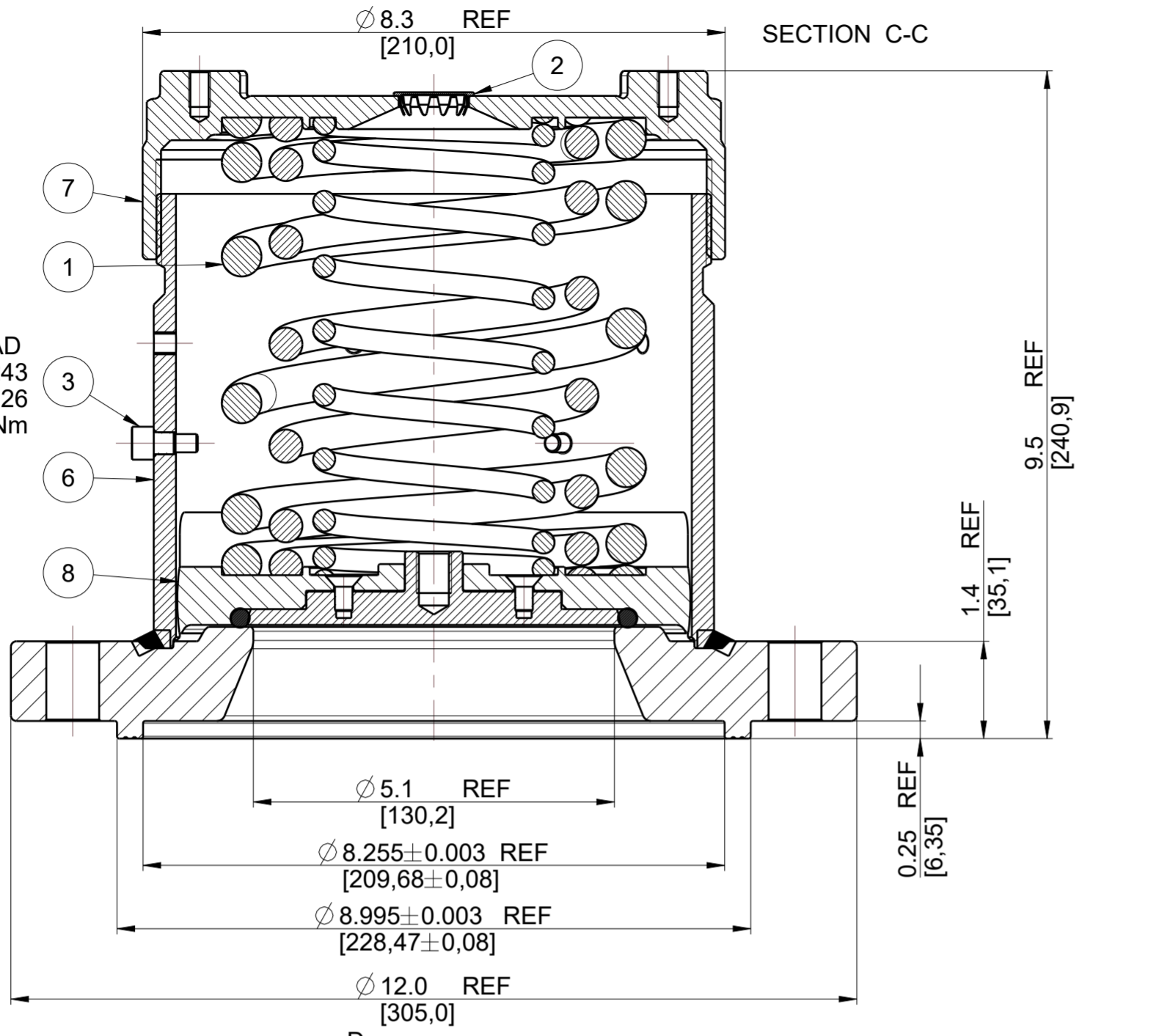
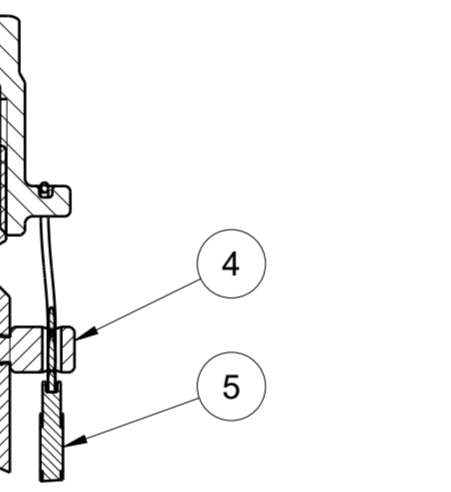


DRAWING STATUS		PRODUCTION	
REVISION	16	SIG	C REID
		Sep-16-19	
0R4/EXXX00130B WAS 0R4/PXXX00130B			

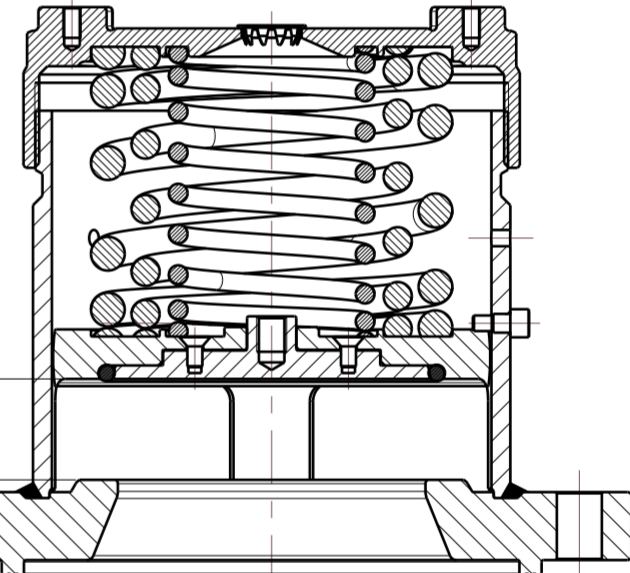


SECTION D-D

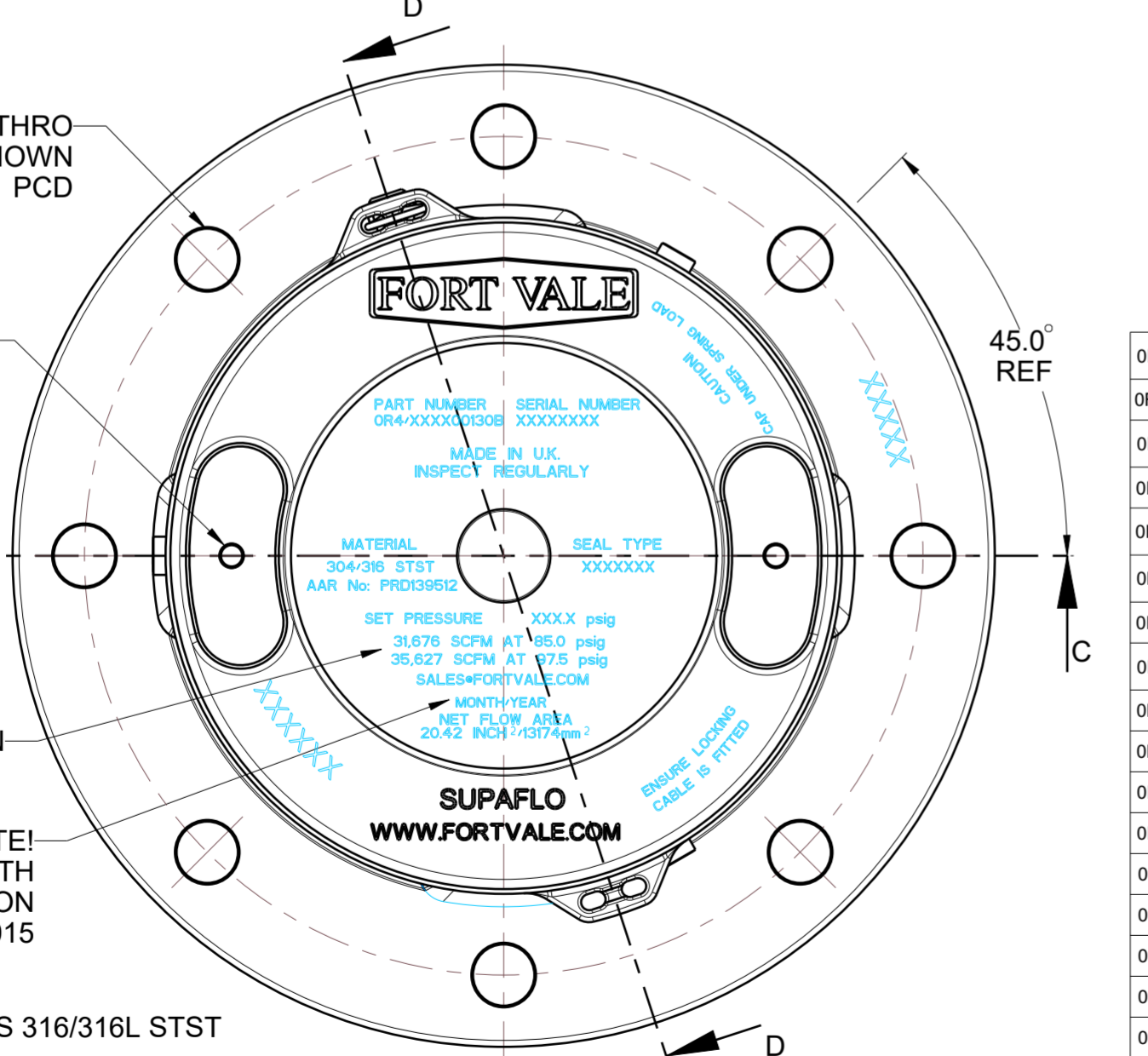


CUT WIRE SHORT AFTER LOCKING CABLE

VALVE IN OPEN POSITION SECTION C-C REL SCALE 5:16



8 HOLES Ø0.75 [19,05] THRO EQUI-SPACED AS SHOWN ON A 10.3 [260,4] PCD



45.0° REF

C

D

0R4/YXXX00130B	1960/Y188	WHITE NEOPRENE (FOOD GRADE)	-30° C (-22° F)	100° C (212° F)
0R4/WXXX00130B	1960/W188	WHITE BUNA N (FOOD GRADE)	-30° C (-22° F)	100° C (302° F)
0R4/SXXX00130B	1960/S188	VITON GF-S (PEROXIDE CURED)	-20° C (-4° F)	150° C (302° F)
0R4/QXXX00130B	1960/Q188	BLACK NEOPRENE	-45° C (-50° F)	100° C (212° F)
0R4/MXXX00130B	1960/M188	VITON A (FOOD GRADE, TRELLEBORG 4560)	-23° C (-10° F)	204° C (400° F)
0R4/HXXX00130B	1960/H188	BLACK EPDM (PEROXIDE CURED)	-45° C (-50° F)	120° C (250° F)
0R4/GXXX00130B	1960/G188	VITON GFLT	-25° C (-13° F)	150° C (302° F)
0R4/EXXX00130B	1960/P188	VITON GF-S (TRELLEBORG CS5350)	-20° C (-4° F)	150° C (302° F)
0R4/DXXX00130B	1960/D188	WHITE EPDM (FOOD GRADE)	-50° C (-58° F)	150° C (302° F)
0R4/CXXX00130B	1960/C188	CHEMRAZ 505	-30° C (-22° F)	150° C (302° F)
0R4/BXXX00130B	1960/B188	VITON B	-20° C (-4° F)	150° C (302° F)
0R4/AXXX00130B	1960/A188	AFLAS	-30° C (-22° F)	150° C (302° F)
0R4/9XXX00130B	1960/E188	EPDM	-50° C (-58° F)	150° C (302° F)
0R4/7XXX00130B	1960/I188	PERFLUOROELASTOMER	-15° C (-5° F)	150° C (302° F)
0R4/4XXX00130B	1960/N188	BLACK BUNA A NITRILE	-30° C (-22° F)	100° C (302° F)
0R4/3XXX00130B	1960/3188	KALREZ 6375	-15° C (-5° F)	150° C (302° F)
0R4/1XXX00130B	1960/F188	FORTYT (FEP)	-55° C (-67° F)	150° C (302° F)
0R4/0XXX00130B	1960/V188	VITON A	-20° C (-4° F)	150° C (302° F)
PART NUMBER	PRESSURE PLATE	'O' RING MATERIAL	MIN TEMP	MAX TEMP

TABLE 2

0R4/X07500130B	75.0	85.0	31,676.4	97.5	35,627.5	6107-8273 (TRIPLE)
PART NUMBER	SET PRESSURE PSI	113% OVER PRESSURE PSI	113% SET PRESSURE FULL FLOW RATE SCFM	130% OVER PRESSURE PSI	130% SET PRESSURE FULL FLOW RATE SCFM	SPRING SET

TABLE 1

DESIGN CODE : ASME VIII DIV 1
 DESIGN PRESSURE (MAWP) : 6.72barg (97.5psig)
 SERVICE TEST PRESSURE : 12.8barg (185psig)
 MAX DESIGN TEMPERATURE : 150°C (302°F)
 MIN DESIGN TEMPERATURE : -55°C (-67°F) } FOR METAL PARTS

REFER TO TABLE 2 FOR SEAL TEMPERATURE LIMITATIONS

PLEASE NOTE!
 OPTIONAL FLUE ASSEMBLY PART NUMBER 1860/0773
 WHEN INSTALLED WILL REDUCE FLOWRATE BY 3%

AAR NUMBER: PRD139512

FORT VALE SALES@FORTVALE.COM WWW.FORTVALE.COM
 ENGLAND, USA, CHINA
 NETHERLANDS, SINGAPORE
 © FORT VALE ENGINEERING LTD 2019. DO NOT SCALE- IF IN DOUBT ASK

UNLESS OTHERWISE STATED		FIRST ANGLE PROJECTION	MATERIAL: 304/316 STST
X.X ±0.5	SURFACE FINISH 3.2um MAX	ISO9001:2008 REGISTERED FIRM: LRQ4007111	SCALE: NTS
X.XX ±0.25	CORNER RADII 0.8		MASS: 32.12 kg
X.XXX ±0.125	CORNER CHAMFER 1.0 X 45°	CHECKED	DVN: 33214
ANGLES ±0.5°	REMOVE ALL BURRS AND SHARP EDGES		

DESCRIPTION: **SUPAFLO RELIEF VALVE**
 TYPE: **AAR RAIL TANKS**
 SHEET 1 OF 1
 DRAWN BY: P BOULT DATE: Feb-28-13
 DRG.NO. **0R4/XXXX00130B**

NOTE! ALL CONTACT PARTS 316/316L STST

8	1960/X188XX	COMPOSITE PRESSURE PLATE (SEE TABLE 2)	METAL PARTS 304 & 316/ O RING SEE TABLE 2	1
7	1865/0048	TOP CAP	304L STST	1
6	1860/0790	BODY WELD ASSEMBLY	304L/316L STST	1
5	1860/0777	No 2 STAINLESS STEEL GRIPPLE LOCK	316 STST	1
4	1860/0776	CABLE NIPPLE	304 STST	1
3	1860/0759	LIFT STOP	304 STST	3
2	10978/1	STAINLESS PLUG	304L STST	1
1	6107-XXXX	PRESSURE SPRING (S) (SEE TABLE 1)	STAINLESS STEEL	1
Index	Part Number	Description	Material	Qty

Assembly BOM