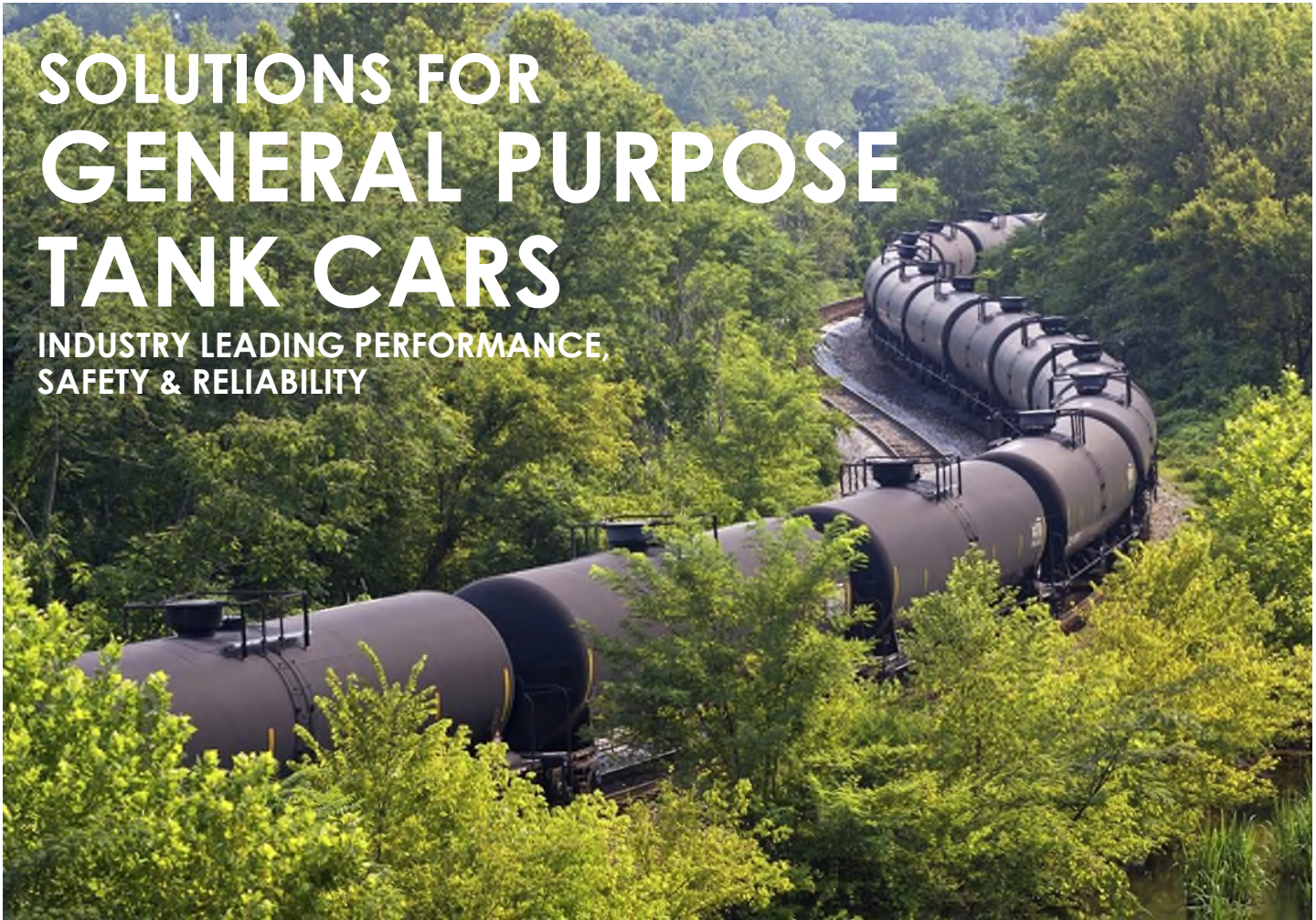


SOLUTIONS FOR GENERAL PURPOSE TANK CARS

INDUSTRY LEADING PERFORMANCE,
SAFETY & RELIABILITY



TRANSQUIP


U.S.A. INC



 **metso**
jamesbury



FORT VALE



DIXON

TRANSQUIP...

As North America's leading tank car supplier of service components and custom engineering services, all the major car builders, lessors, shippers, repair shops and loading facilities rely on TransQuip to provide a comprehensive selection of industry leading products, technical advice and unrivaled sales support.

TransQuip maintains the largest inventory of tank car service equipment and components with 90% of orders shipped on the day ordered.

Whether you need products information, industry-leading training, engineering support or inspection services, TransQuip provides a turnkey solution for all your tank car needs.

The following pages highlight products that exceed all FRA & Transport Canada testing and regulatory requirements...



ASSOCIATION
OF AMERICAN
RAILROADS



BALL VALVES

TransQuip offers an extensive line of Ball Valves backed by a 5 year Warranty.

Available in Carbon, Stainless, Monel, Hastelloy C or Alloy 20 bodies. These valves are also offered in numerous profiles, flanges, seat materials.



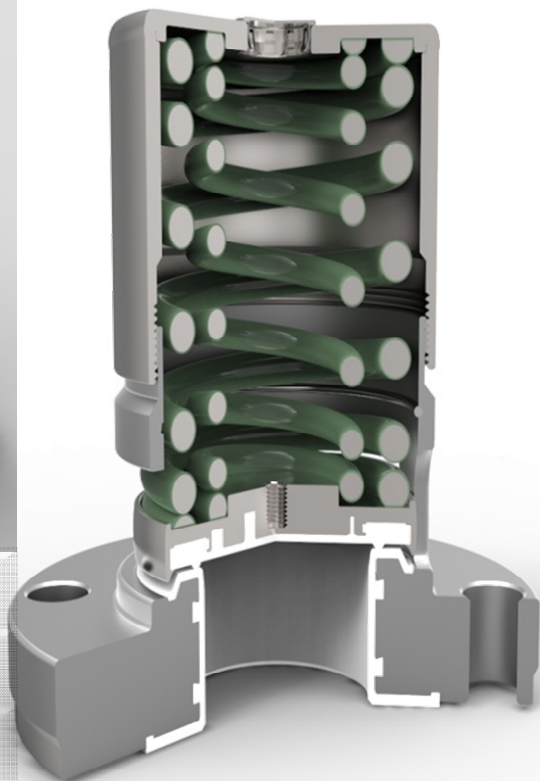
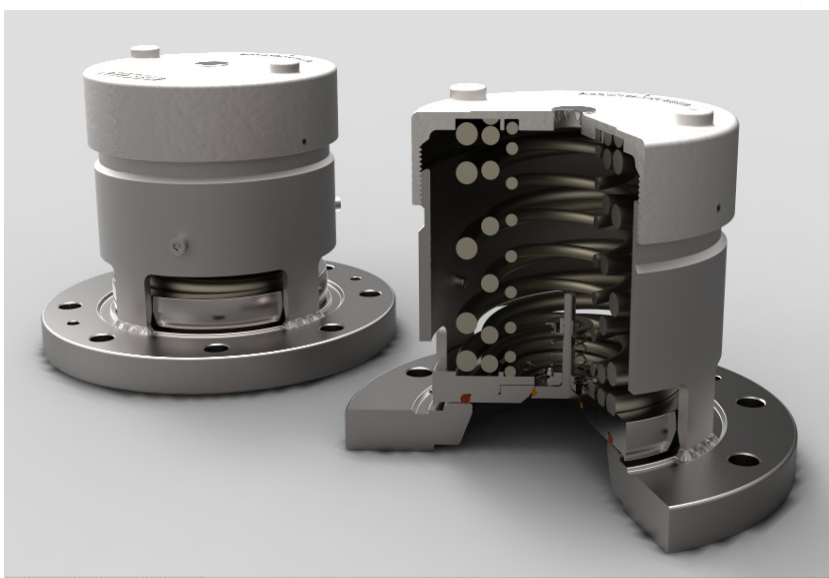
- Exceeds ALL AAR Requirements
- Industry leading cycle life
- Flexible lip seat provides bi-directional zero-leak shut-off
- Broad selection of PTFE seat options
- Patented stem seal system
- Live loaded stem packing
- API 607 (Fire-Tite) as standard
- API 608 (grounding) as standard

PRESSURE RELIEF VALVES

TransQuip's comprehensive range of PRD's far exceed AAR requirements with approximately 700% more SCFM vs comparable competitors. All backed by a 3 Year Warranty.

Available in Stainless Steel (Alloy 59 or Hastelloy upon request) in numerous flange configurations and seal materials

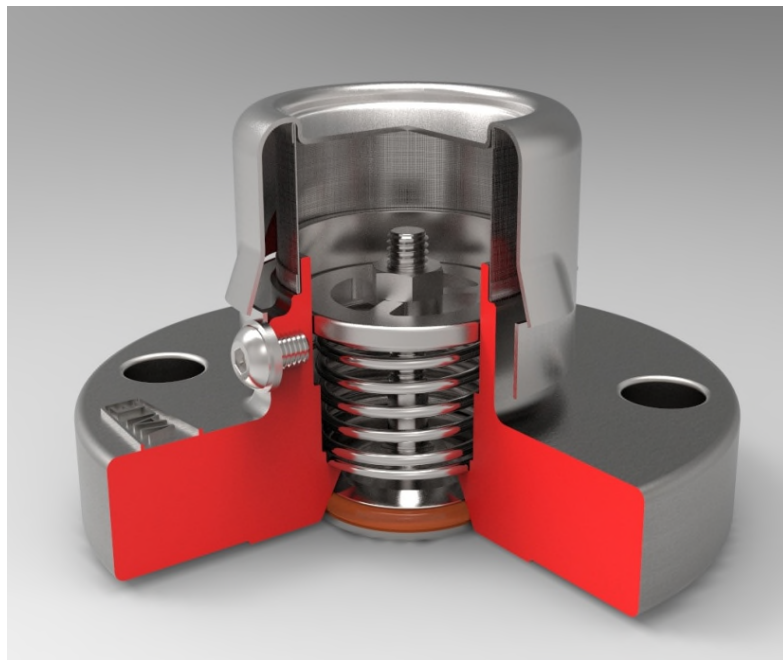
- Externally Mounted & Low Profile
- Double Spring Design
- PFA / PTFE Lined (Acid) Valve Option



MODEL	PSIG	SCFM
OR3	75 / 165	10,131 / 22,286
OR4	75	31,676
OU3	165	22,286

VACUUM RELIEF VALVES

- 0.25 psi to 13.0 psi
- 100% 316 Stainless Steel
- Exceeds AAR criteria
- Suitable for Raised Face applications
- Multiple flange options

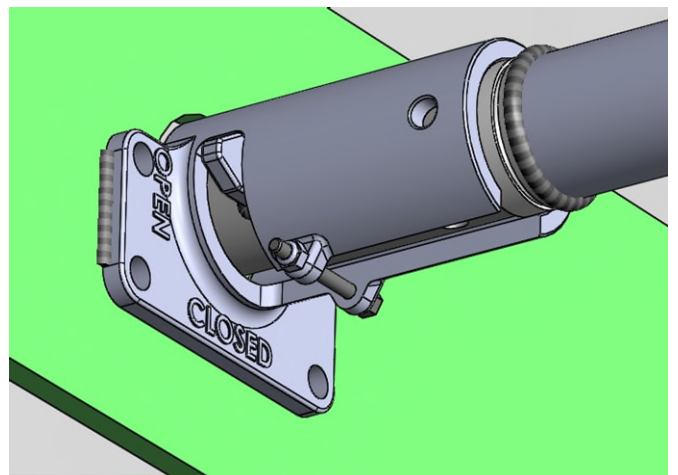
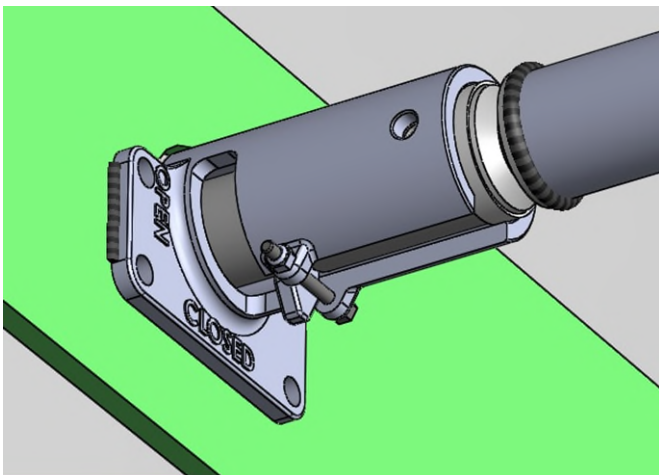
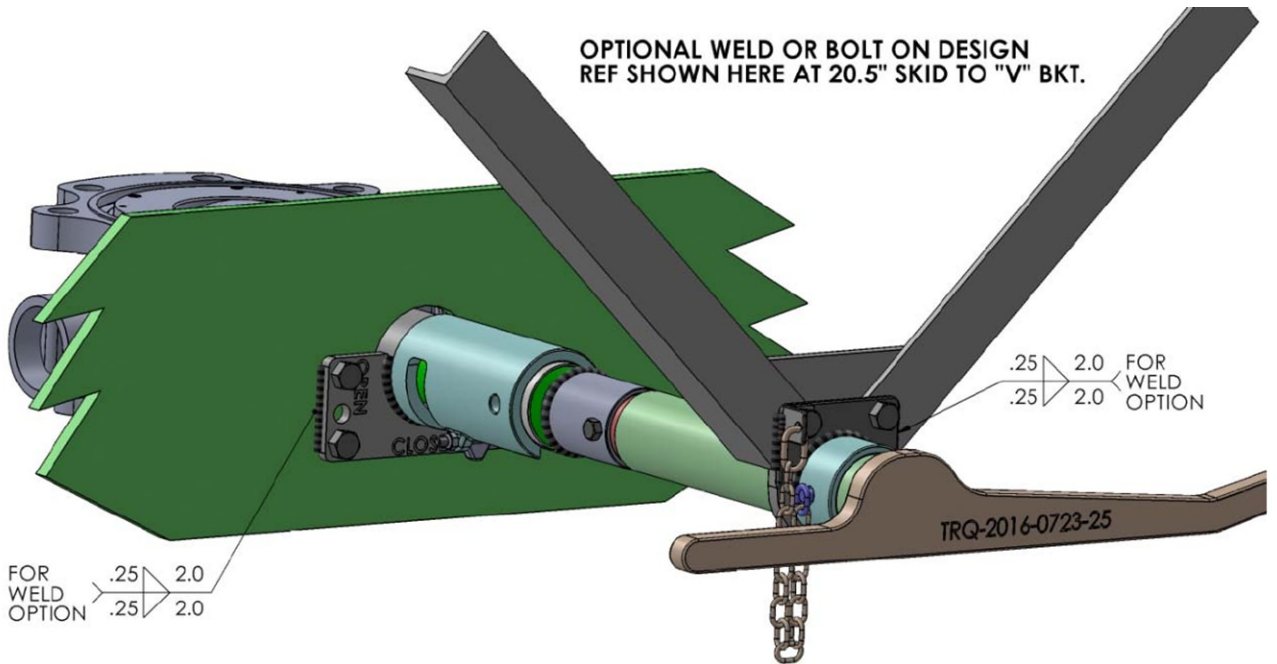


GAUGE DEVICE

- 100% Stainless Steel construction
- Neodymium float magnet
(provides optimal coupling with float)
- Over 1" of collar adjustment
- Acme thread gauge head (easy cap on & off)
- Cushioned springs (eliminate wear on float)
- Innovative securement of Teflon Guide
- Bushing Slip on mounting flange fits various bolt circles

DISENGAGING BOV HANDLE

- Fits all Car Types
- Eliminates alignment issues with jacket sagging
- Fits ALL car builds



SELECTION GUIDE

Petrochemical Tank Car Models

Petrochemical Tank Car Models	
Car Model Attributes	Applications
DOT Class	Various
Car Type	111A100W1
Manway	General Purpose
Liquid Valve	Baier BTSB-HY-R
Vapor Valve	Jamesbury 3" 9150RR Full Port Fig'd Jamesbury 3" 7150RR Std. Port Fig'd Jamesbury 3" 7RRR Std. Port Fig'd Jamesbury 3" 6FRF Full Port Fig'd X Thd
Pressure Relief Valve	Jamesbury 2" 9150RR Full Port Fig'd Jamesbury 2" 7150RR Std. Port Fig'd Jamesbury 2" 7RRR Std. Port Fig'd Jamesbury 2" 6FRF Full Port Fig'd X Thd
Vacuum Relief Valve	Fort Vale 0R3/X075006X (75 PSI STD) Fort Vale 0R3/X165006X (165 PSI STD)
Gauge Device	Fort Vale 48/XX00XXCX
Themowell	TransQuip TQ-50 (If Required) N/A
Sample Line	N/A
Bottom Outlet Valve	Jamesbury 4" 9RET4 (SJ - Std. Profile) Jamesbury 4" 9REL4 (SJ - Low Profile)
Dis-engaging Handle	Consult TransQuip TQ-9-XX
BOV Outlet Nozzle	TRQ-2014-1011 TRQ-2014-1214
BOV Outlet Cap w/Plug	BOV-CAP-XX
BOV Aux. Valve (If Required)	Jamesbury 2" 6FR (Thd. Valve)

Flammable Liquids Tank Car Models

Flammable Liquids Tank Car Models	
Car Model Attributes	Applications
DOT Class	Various
Car Type	117J100W1
Manway	General Purpose
Liquid Valve	Baier BTSB-HY-R
Vapor Valve	Jamesbury 3" 9150RR Full Port Fig'd Jamesbury 3" 7150RR Std. Port Fig'd Jamesbury 3" 7RRR Std. Port Fig'd Jamesbury 3" 6FRF Full Port Fig'd X Thd
Pressure Relief Valve	Jamesbury 2" 9150RR Full Port Fig'd Jamesbury 2" 7150RR Std. Port Fig'd Jamesbury 2" 7RRR Std. Port Fig'd Jamesbury 2" 6FRF Full Port Fig'd X Thd
Vacuum Relief Valve	Fort Vale 0R3/X075006X (75 PSI STD) Fort Vale 0R4/X07500130X (75 PSI STD) High Flow
Gauge Device	Fort Vale 48/XX00XXCX
Themowell	N/A
Sample Line	N/A
Bottom Outlet Valve	Jamesbury 4" 9RET3 (Std. Profile) Jamesbury 4" 9REL3 (Low Profile)
Dis-engaging BOV Handle	Consult TransQuip TQ-9-XX
BOV Outlet Nozzle	TRQ-9-XX
BOV Outlet Cap w/Plug	BOV-CAP-XX
BOV Aux. Valve (If Required)	N/A

* This selection guide is for illustrative purposes. For specific car types, model / part numbers, valve, seat or gasket materials, please consult TransQuip

SELECTION GUIDE

Chemical Tank Car Models

Car Model Attributes	Applications		
	Sulfuric Acid 111A100W2	Caustic Soda 111A100W1	Hydrochloric Acid 111A100W5
DOT Class			111A100W1
Car Type	General Purpose		
Manway	N/A	BTSB-HY-R	Consult TransQuip
Liquid Valve	2" Threaded Cap	Jamesbury 3" 9150RR SST Full Port Fig'd Jamesbury 3" 7150RR SST Std. Port Fig'd Jamesbury 3" 7RRR SST Std. Port Fig'd. Jamesbury 3" 6FRF SST Full Port Fig'd X Thd.	N/A
Vapor Valve	Jamesbury 1" 6FRF	Jamesbury 2" 9150RR SST Full Port Fig'd Jamesbury 2" 7150RR SST Std. Port Fig'd Jamesbury 2" 7RRR SST Std. Port Fig'd. Jamesbury 2" 6FRF SST Full Port Fig'd X Thd.	N/A
Pressure Relief Valve	Safety Vent	Fort Vale 0R3/X075006X (75 PSI STD) Fort Vale 0R3/X165006X (165 PSI STD)	Fort Vale 0U3/X165006X (165 PSI STD) Teflon Lined
Vacuum Relief Valve	Fort Vale 48/XX00XXCX	Fort Vale 48/XX00XXCX	Fort Vale 48/XX00XXCX
Gauge Device	N/A	N/A	TransQuip TQ-50 (If Required)
Thermowell	N/A	N/A	N/A
Sample Line	N/A	N/A	N/A
Bottom Outlet Valve	Bottom Washout	Jamesbury 4" 9REI4 SST (SJ - Std. Profile) Jamesbury 4" 9REI4 SST (SJ - Low Profile)	Jamesbury 4" 9REI4 (SJ - Std. Profile) Jamesbury 4" 9REI4 (SJ - Low Profile)
Dis-engaging Handle	N/A	Consult TransQuip	Consult TransQuip
BOV Outlet Nozzle	N/A	TQ-9-SS TRQ-2014-1011	TQ-9-XX TRQ-2014-1011 TRQ-2014-1214
BOV Outlet Cap & Plug	N/A	BOV-CAP-SS	BOV-CAP-XX
BOV Aux. Valve (If required)	N/A	Jamesbury 2" 6FR (Thd. Valve)	Jamesbury 2" 6FR (Thd. Valve)

* This selection guide is for illustrative purposes. For specific car types, model/ part numbers, valve, seat or gasket materials, please consult TransQuip

SELECTION GUIDE

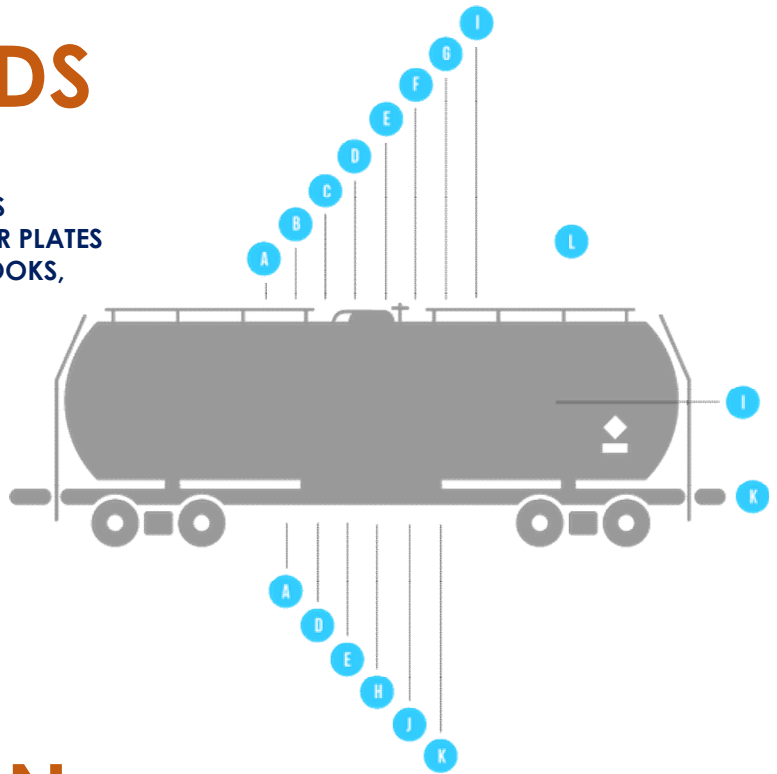
Agriculture & Fertilizer Tank Car Models

Car Model Attributes	Applications		
	Corn Syrup	Vegetable Oil	Fertilizer
DOT Class	211A100W1		
Car Type	General Purpose		
Capacity (US Gallons)	19,900	28,700	20,500
Manway	Baier BTSB-HY-R	Baier BTSB-HY-R	Baier BTSB-HY-R
Liquid Valve	N/A	Jamesbury 3" 9150RR Full Port Fig'd Jamesbury 3" 7150RR Std. Port Fig'd Jamesbury 3" 7RRR Std. Port Fig'd Jamesbury 3" 6FRE Full Port Fig'd X Thd	Jamesbury 3" 9150RR Full Port Fig'd Jamesbury 3" 7150RR Std. Port Fig'd Jamesbury 3" 7RRR Std. Port Fig'd Jamesbury 3" 6FRE Full Port Fig'd X Thd
Vapor Vale	3/4" Air Inlet	Jamesbury 2" 9150RR Full Port Fig'd Jamesbury 2" 7150RR Std. Port Fig'd Jamesbury 2" 7RRR Std. Port Fig'd Jamesbury 2" 6FRE Full Port Fig'd X Thd	Jamesbury 2" 9150RR Full Port Fig'd Jamesbury 2" 7150RR Std. Port Fig'd Jamesbury 2" 7RRR Std. Port Fig'd Jamesbury 2" 6FRE Full Port Fig'd X Thd
Pressure Relief Valve	Fort Vale 0R3/X075006X (75 PSI STD) Fort Vale 0R3/X165006X (165 PSI STD)	Fort Vale 0R3/X075006X (75 PSI STD) Fort Vale 0R3/X165006X (165 PSI STD)	Fort Vale 0R3/X075006X (75 PSI STD) Fort Vale 0R3/X165006X (165 PSI STD)
Vacuum Relief Valve	N/A	Fort Vale 48/XX00XXCX	Fort Vale 48/XX00XXCX
Gauge Device	N/A	N/A	N/A
Thermowell	N/A	N/A	N/A
Sample Line	N/A	N/A	N/A
Bottom Outlet Valve	Jamesbury 6" WSRR 36HBT 6KT	Jamesbury 4" 9RET3 (Std. Profile) Jamesbury 4" 9REL3 (Low Profile)	Jamesbury 4" 9RET3 (Std. Profile) Jamesbury 4" 9REL3 (Low Profile)
Dis-eneagging Handle	N/A	Consult TransQuip	Consult TransQuip
BOV Outlet Nozzle	TRQ-2015-0126	TQ-9-XX TRQ-2014-1011 TRQ-2014-1214	TQ-9-XX TRQ-2014-1011 TRQ-2014-1214
BOV Outlet Cap w/ Plug	TRQ-2015-0127	BOV-CAP-XX	BOV-CAP-XX
BOV Aux. Valve (If Required)	N/A	Jamesbury 2" 6FR (Thd. Valve)	Jamesbury 2" 6FR (Thd. Valve)

* This selection guide is for illustrative purposes. For specific car types, model/ part numbers, valve, seat or gasket materials, please consult TransQuip

ALL YOUR NEEDS

- A. NOZZLE CAPS, PLUGS, SADDLES & SKIDS
- B. MANWAYS, MANWAY COVERS/ COVER PLATES
- C. EYEBOLTS, SEAL PINS, DOME PINS, J-HOOKS, GROUND LUGS & STUDS
- D. DRY LOCK® & QUICK DISCONNECT
- E. TRANSZCOAT, COATINGS & DECALS
- F. CHEMRAZ®, GASKETS & O-RINGS
- G. GENERAL SERVICES VALVES
- H. PRESSURE CAR VALVES
- I. LEVEL DEVICES
- J. VALVE REPAIR KITS
- K. TANK CAR PARTS
- L. HEATING COMPONENTS



COMING SOON

- 2" & 3" PFA lined Ball Valve
- 316 Stainless Steel Body
- Zirconium Full Port Ball & Stem
- Low Profile
- Repairable

Contact Us

Main Office:
3360-C Lake Shore Boulevard
Jacksonville, Florida 32210
Phone: 904-388-6699
Web: www.transquip.com

Distribution:
4619 North Sam Houston Parkway
East
Houston, Texas 77032
Phone: 281-442-8000
Email: sales@transquip.com

